

Pursuant to Commissioner's Regulation, Section 155.17 (c) (3), this plan was made available for public comment 30 days prior to its adoption. The district-wide plan may be adopted by the School Board only after at least one public hearing that provides for the participation of school personnel, parents, students and any other interested parties. The plan was formally adopted by the Board of Education at its regular meeting on August 22nd.

WESTHILL CENTRAL SCHOOL DISTRICT



DISTRICT-WIDE SAFETY PLAN

(Project S.A.V.E. - Schools against Violence in Education)

Distribution List:

School Superintendent
Assist. Superintendent for Curriculum & Instruction
Assist. Superintendent for Business Administration
Building Administrators
Director of Facilities

Revision: August 22, 2022

Westhill Central School District
District-wide Safety Plan

Table of Contents

INTRODUCTION	4
DEFINITIONS	7
1. POTENTIAL EMERGENCY SITES AND HAZARD ID	9
A. MAPS, FLOOR PLANS AND DISTRICT MAPS	9
B. SURVEY OF VULNERABILITY	9
2. STANDARD EMERGENCY RESPONSE PROCEDURES (155.17(c)(1)(xv))	9
A. GENERAL EVACUATION	9
B. EVACUATION OF STUDENTS WITH DISABILITIES, STAFF AND FACULTY	11
C. SHELTERING	11
D. LOCKDOWN	12
E. LOCKOUT	12
F. HOLD-IN-PLACE	13
G. EARLY DISMISSAL	13
3. IDENTIFICATION OF APPROPRIATE RESPONSES TO EMERGENCIES.....	14
A. BOMB THREATS	14
B. HOSTAGE SITUATION	15
C. INTRUDER	15
D. KIDNAPPED PERSON	15
4. PREVENTION AND INTERVENTION STRATEGIES (155.17(c)(1)(iii))	16
A. STUDENT INTERVENTION PROGRAMS	16
5. EARLY DETECTION OF POTENTIALLY VIOLENT BEHAVIORS (155.17(c)(1)(xii))	16
A. INDICATION OF POTENTIALLY VIOLENT BEHAVIOR	16
B. INTERPRETATION OF WARNING SIGNS	17
6. COMMUNICATION, EARLY DETECTION AND REPORTING OF POTENTIALLY VIOLENT BEHAVIORS (155.17(c)(1)(xvi))	17
7. RESPONDING TO IMPLIED OR DIRECT THREATS OF VIOLENCE (155.17(c)(1)(iii))	17
A. PROCEDURES	17
8. RESPONDING TO ACTS OF VIOLENCE (155.17(c)(1)(ii))	19
A. RESPONDING TO ACTS OF VIOLENCE.....	19
B. POST INCIDENT RESPONSE TEAM	19
C. COUNSELING	19
9. SITUATIONAL/MULTIHAZARD RESPONSES (155.17(c)(1)(xv))	20
A. GENERAL PROTOCOLS	20
B. HAZARD SPECIFIC RESPONSES	20
10. CONTACTING LAW ENFORCEMENT IN AN EMERGENCY (155.17(c)(1)(iv))	20
A. SEQUENCE OF ACTIONS.....	20
11. COORDINATING USE OF DISTRICT RESOURCES IN AN EMERGENCY (155.17(c)(1)(vii & viii))	21
A. RESOURCES AVAILABLE	21
B. STAGING AND TREATMENT AREAS	21
C. LOCATIONS OF THE INCIDENT COMMAND POST	21
D. PERSONNEL AT THE INCIDENT COMMAND POST	21
E. DUTIES OF THE SUPERINTENDENT (155.17 (C)(1)(XIX))	22
F. DUTIES OF THE BUILDING ADMINISTRATOR OR SITE SUPERVISOR	23
G. DUTIES OF FACULTY AND STAFF	23
H. DUTIES OF THE CUSTODIANS	24
I. DUTIES OF THE SCHOOL NURSE	24
J. DUTIES OF THE DIRECTOR OF FACILITIES OR DESIGNEE	25
K. DUTIES OF SECRETARIAL AND SUPPORT STAFF	25

Westhill Central School District
District-wide Safety Plan

Table of Contents – continued

L. DUTIES OF THE DISTRICT SPOKESPERSON OR (PIO)	25
M. DUTIES OF TRANSPORTATION SUPERVISOR OR DESIGNEE	27
N. DUTIES OF THE SCHOOL LUNCH DIRECTOR OR DESIGNEE	27
12. EMERGENCY ASSISTANCE FROM OTHER GOVERNMENTAL AGENCIES (155.17(c)(1)(v))	27
13. INTER-AGENCY ADVICE AND ASSISTANCE (155.17(c)(1)(vi))	28
14. INTERNAL & EXTERNAL NOTIFICATIONS (155.17(c)(1)(ix & x))	28
A. DUTIES OF THE SUPERINTENDENT	28
1. STATE EDUCATION DEPARTMENT	28
2. NOTIFICATION OF OCM BOCES SUPERINTENDENT	28
B. PARENTS & GUARDIAN NOTIFICATION	28
C. COMMUNITY NOTIFICATION	28
15. SCHOOL SAFETY PERSONNEL (155.17(c)(1)(xvii))	29
A. ALL STAFF	29
16. MULTI-HAZARD SCHOOL SAFETY TRAINING (155.17(c)(1)(xiii))	30
A. TRAINING OF STAFF	30
17. SCHOOL SAFETY TRAINING FOR STAFF AND STUDENTS	30
A. RESPONSIBILITIES OF THE DISTRICT	30
B. RESPONSIBILITIES WITH RESPECT TO STAFF	30
18. EMERGENCY DRILLS AND EXERCISES (155.17(c)(1)(xiv))	31
A. CONDUCT OF DRILLS	31
B. FIRE DRILLS	31
19. PLAN DISTRIBUTION AND REVIEW	32
A. COPIES OF THE PLAN	32
20. IMPLEMENTATION OF SCHOOL SECURITY (155.17(c)(1)(xi))	32
A. BASIC PROCEDURES	32
B. VISITOR PROCEDURES	32
C. STAFF RESPONSIBILITIES	33
21. INDIVIDUAL BUILDING INFORMATION	33

Appendices

A. Administrator Telephone Numbers/District-Wide School Safety Team	34
B. Emergency Response Team/ Agency Telephone Numbers	35
C. Annual Written Instructions to Students and Staff (Emergency Closing Procedures)	37
D. Resources Available within the District	38
E. Gotta Go Bags	39
F. Non-Public Schools and Day Care Centers	40
G. Red Cross Agreement	41
H. School Resource Officer Agreement	42
I. Communicable Disease Plan	46

Westhill Central School District
District-wide Safety Plan

INTRODUCTION

District-wide Safety Plan: This District wide safety plan has been developed to comply with the mandates of the Safe Schools Against Violence in Education Act (“Project SAVE”) and the Regulations of the Commissioner of Education at 8 NYCRR Section 155.17(c). This plan shall be reviewed on an annual basis on or before September 1st of each year.

Board of Education Approval: In accordance with Board of Education policy 5681 School Safety Plans, the Board of Education appointed a district wide school safety team. The district-wide school safety team is comprised of representatives from administration, faculty, support staff, school safety personnel, OCM BOCES Health & Safety, and other individuals. The district-wide school safety team reviewed the school safety plan. The school safety plan provides standard procedures to guide staff and students of the Westhill Central School District when responding to an emergency. It also sets forth the required drills to keep staff and students familiar with the standard response procedures. This plan was adopted by the Board of Education on August 22, 2022. Building level plans will be submitted to the State Education Department on, or before October 1, 2022 as required by 8 NYCRR 155.17 School Safety Plans.

Scope of Plan: Emergency situations can range from man-made problems such as power outages, fires and bomb threats to natural disasters like blizzards and floods, and may present highly dangerous situations or mere inconveniences. In an emergency situation, the District’s priorities are first the protection of life, then preservation of property, and restoration to normal activities. This Plan and the Building Level Emergency Response Plans describe procedures for a variety of emergencies. Obviously, no plan can cover all possible emergencies. Therefore, District officials are to use their judgment and discretion in responding to an emergency in a manner consistent with the provisions of this Plan and the applicable school Building Level Emergency Response Plan in a manner that will minimize loss of life, personal injury and property damage. Project SAVE requires that this Plan include policies and procedures on several prescribed topics. In some instances, only a general policy on a prescribed topic is described for the District as a whole. Specific emergency responses to various contingencies (i.e. bomb threats and dangerous persons), and the confidential procedures to implement such responses, are included within the Building Level Emergency Response Plans specific to each school.

Building Level Emergency Response Plans have been developed to comply with Project SAVE and updated NY Safe School initiatives to establish specific emergency response plans for each school building. These Building Level Emergency Response Plans provide detailed response procedures for each school building in the District. In contrast to this Plan, which is accessible to the public, the Building Level Plans are confidential and not subject to disclosure under Article 6 of the Public Officers Law, the Freedom of Information Act, or any other provision of law, in accordance with Education Law, Section 2801-a. Therefore, the Building Level plans provide a confidential means to outline sensitive emergency procedures not included herein.

Westhill Central School District
District-wide Safety Plan

INTRODUCTION - Continued

Building Level Emergency Response Plans - Continued

Such plans comply with the requirements of Education Law §2801-a (3) and the Regulations of the Commissioner of Education at 8 NYCRR §155.17(c)(2) and have been established for each instructional facilities as follows.

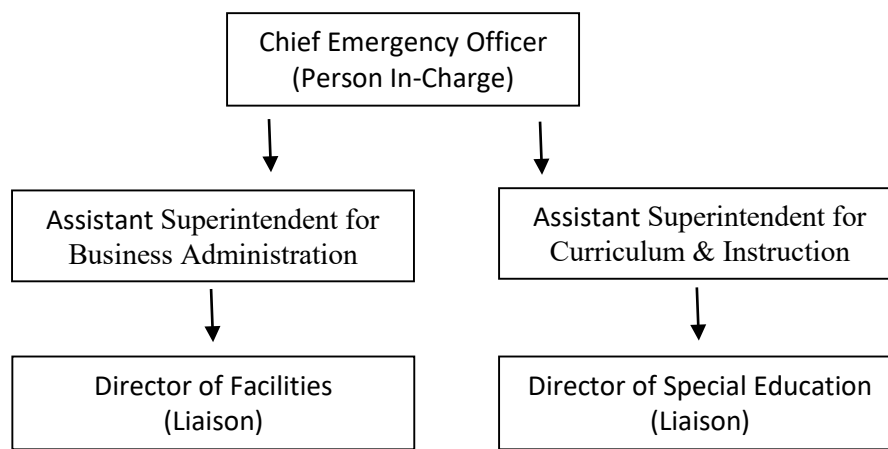
1. Walberta Park Elementary School: K – 1
2. Cherry Road Elementary School: 2 -4
3. Onondaga Hill Middle School: 5 – 8
4. Westhill High School: 9 - 12

District Chain of Command: The Superintendent is the Chief Emergency Officer also referred to as the “Individual-In-Charge”. In his/her absence the responsibility will go to the next alternate person in charge as detailed below. When the Individual-In-Charge has been notified that an emergency exists, he/she will serve as “Incident Commander”, activating the appropriate procedures, directing the emergency response actions and serving as part of a unified command system with emergency responders. Administrative chain of command (person in charge) if the Superintendent is not available:

Assistant Superintendent for Business Administration
Assistant Superintendent for Curriculum & Instruction
Director of Facilities

Command Post: If the crisis demands the necessity to establish a “Command Post”, the District Office will be used for this purpose.

Incident Command Structure:



Westhill Central School District
District-wide Safety Plan

DEFINITIONS

- A. ACCIDENTAL DISASTER - Any major fire, explosion, transportation crash, hazardous material incident or other major occurrence in which the lives, safety or property of numerous persons is in jeopardy.
- B. BUILDING ADMINISTRATOR - The principal of a school building or his or her designee.
- C. BUILDING LEVEL EMERGENCY RESPONSE PLAN - A building-specific school emergency response plan that addresses crisis intervention, emergency response and management at the building level and contains the provisions required by 8 NYCRR §155.7(c)(2).
- D. BUILDING RESPONSE TEAM – Individuals within the school building designated to serve specific roles in responding to an emergency or individuals who may be called upon to assist response and recovery efforts during a crisis.
- E. BUILDING SAFETY/RESPONSE TEAM - The building-specific team appointed by the Building Administrator, in accordance with regulations or guidelines prescribed by the Board, to develop specific emergency procedures at the building level. The Building Safety Team shall include, but not be limited to, representatives of teacher, administrator, and parent organizations, school safety personnel, other school personnel, community members, local law enforcement officials, local ambulance or other emergency response agencies, and any other individuals the Board deems appropriate.
- F. CHIEF EMERGENCY OFFICER – Is the Superintendent or his designee. This person is the Incident Commander or the person in-charge of an incident NOT associated with a fire or police matter. In these incidents, the fire department or police department, respectfully, will be in-charge of the incident as the Incident Commander. The Chief Emergency Officer will represent Westhill School District at the command post in the event of an emergency.
- G. CIVIL DISORDER - An action by any individual or group that poses a substantial threat to peace, life and/or property or any tumultuous or violent activity that creates a grave risk of causing public alarm.
- H. DISASTER – The occurrence or imminent threat of injury, loss of life, or severe damage to property, resulting from any natural or manmade causes, such as fire, flood, earthquake, hurricane, tornado, high water, landslide, mudslide, windstorm, wave action, epidemic, air contamination, drought, explosion, water contamination, chemical accident, war or civil disturbance.
- I. DISTRICT WIDE SCHOOL SAFETY TEAM – A District wide school safety team appointed by the Board. The District wide team shall include, but not be limited to, representatives of the Board of Education, student, teacher, administrator, and parent organizations, and other school personnel.
- J. EARLY DISMISSAL – Returning students to their homes or other appropriate locations before the end of the school day.
- K. EMERGENCY – A situation, including but not limited to a disaster that requires immediate action, occurs unpredictably, and poses a threat of injury or loss of life to students or school personnel or of severe damage to school property.

Westhill Central School District
District-wide Safety Plan

DEFINITIONS – Continued

- L. EMERGENCY RESPONSE BAG “Gotta Go Bag” - A conspicuously marked carry bag maintained in the Building Administrator’s office containing emergency response information. This bag is to be transported to the Command Post and Staging areas during emergency responses.
- M. EMERGENCY SERVICES ORGANIZATION – A public or private agency, organization or group other than a governmental agency, which provides police, fire, medical, ambulance, rescue, housing or other services for the relief of human suffering, injury or loss of life or property as a result of an emergency.
- N. EMS COMMANDER - The Emergency Medical Services supervisor directing EMS operations for the incident.
- O. EVACUATION to Assembly Areas or (Assembly Area) - Moving students for their protection inside a school building to a predetermined location in response to an emergency. All building occupants are required to exit the building and wait a safe distance from the building until further instructions.
- P. FIELD COMMAND POST - The on-scene location for command staff who will be responsible for determining the exact status of the emergency, resources needed, and incident strategy.
- Q. FIRE COMMANDER - The fire chief directing fire-fighting operations at the incident.
- R. HOLD IN-PLACE – An action to clear the hallways for various issues (medical or policy events) when expedient clearance of the hallways may be necessary. The emergency response used in situations where it is necessary to have students/staff remain in their classrooms or work-areas temporarily during an emergency or medical emergency until things can be returned to normal or early dismissal can be arranged.
- S. INCIDENT COMMANDER - The supervisor with decision making responsibility when responding to a particular emergency.
- T. INNER PERIMETER - The immediate area of containment around the incident site.
- U. LANDING ZONE - A clear level area no less than 100 feet by 100 feet in area for helicopter landings. The landing zone should be within the outer perimeter when possible, and secured by ground personnel during helicopter operations.
- V. LOCKDOWN - This emergency response is to be used when walking through the building would endanger the health and safety of students/staff. In the event of a dangerous person or intruder, students and faculty are to remain in place. Classroom doors and windows should be locked.

Westhill Central School District
District-wide Safety Plan

DEFINITIONS - Continued

- W. LOCKOUT- Allows no unauthorized personnel into the building. All exterior doors are locked and main entrance is monitored by administrators, security or school resource officer. This procedure allows the school to continue with the normal school day, but curtails outside activity. Most commonly used when incident is occurring outside school building, on or off school property.
- X. MEDIA STAGING AREA - The location outside of the inner perimeter dedicated for media assembly and equipment staging. This location may also be used to conduct media briefings.
- Y. NATURAL DISASTER - Those incidents in which the forces of nature threaten the lives, safety and/or property of numerous persons (e.g., floods, tornado, and significant snowfall/blizzard, etc.).
- Z. OUTER PERIMETER - The peripheral control area surrounding the inner-perimeter providing a safe zone for access to and from the inner-perimeter as well as defining the limit of access by unauthorized persons.
- AA. POLICE DETAIL COMMANDER - The police supervisor commanding police personnel detailed to the incident.
- BB. POST-INCIDENT RESPONSE TEAM – A building-specific team designated by the Building Safety Team that includes appropriate school personnel, medical personnel, mental health counselors and others who can assist the school community in coping with the aftermath of a Serious Violent Incident or Emergency.
- CC. RELOCATION CENTER - A location established for providing temporary shelter or care for persons displaced by an emergency.
- DD. REUNIFICATION AREA – A predetermined location where parents or authorized persons can pick up students during an emergency.
- EE. SCHOOL CANCELLATION – A determination by school officials that a school or schools should not be in session for one or more school days due to an emergency.
- FF. SERIOUS VIOLENT INCIDENT – An incident of violent criminal conduct that is, or appears to be, life threatening. This situation warrants the evacuation or “Lockdown” of students and/or staff because of an imminent threat to their safety or health. Situations include, but are not limited to: riot, hostage taking, kidnapping and/or the use or threatened use of a firearm, explosive, bomb, incendiary device, chemical or biological weapon, knife or other dangerous instrument capable of causing death or serious injury.
- GG. SHELTER IN-PLACE – The emergency response of keeping students in school buildings and providing them with shelter when it is deemed safer for students to remain inside rather than to return home or be evacuated (e.g., air pollution problems, chemical spills, radiological emergencies). Staff and students are held in a designated shelter location or common area inside the building, inside a gymnasium, cafeteria or etc., during an emergency or medical emergency until things can be returned to normal or dismissal can be arranged.
- HH. STAGING AREA - A location selected generally within the outer perimeter to facilitate arriving resources and personnel responding for assignments.
- II. TERRORIST ACTION - A hostile action taken by a person or group that has as its intent the commission of violent acts designed to instill fear, communicate a message and/or demand some action.

Westhill Central School District
District-wide Safety Plan

- JJ. TREATMENT AREA - The location inside the inner perimeter to which the victims are evacuated for medical evaluation and emergency treatment prior to transport.
- KK. UNIFIED COMMAND – The safety plan command system which ensures that the Incident Commander shall communicate and consult with the Superintendent prior to giving any order or instruction during or after the occurrence of a violent incident.

1. POTENTIAL EMERGENCY SITES AND HAZARD IDENTIFICATION

A. MAPS AND FLOOR PLANS

Generally, the sites of potential hazards are:

1. Utility Shut-off (Gas, Water, and Electrical)
2. Chemical Storage areas
3. Mechanical Storage areas
4. Kitchen area(s)
5. Mechanical rooms (HVAC, etc.)
6. Fuel Storage tanks

The Building Level Emergency Response Plans will include map renderings and floor plans of each building. The potential hazards for each building will be clearly indicated, and are placed with appropriate agencies.

B. SURVEY OF VULNERABILITY

The buildings covered in this plan include:

Walberta Park School: grades K – 1
Cherry Road Elementary School: grades 2 – 4
Onondaga Hill Middle School: grades 5 – 8
Westhill High School: grades 9 – 12

We have surveyed sources of potential emergencies within our school buildings, grounds and community locations. Site-maps and floor plans of our buildings have been provided to local police and law enforcement but are kept confidential due to security reasons. Our instructional sites are all located within proximity to urban minor arterial roads. A survey of vulnerability is included in each building level plan.

2. STANDARD EMERGENCY RESPONSE PROCEDURES - 155.17 (c)(1)(xv)

A. GENERAL EVACUATION

Evacuations may be necessary in the event of fire, weather, and other emergency, or violent incident. Upon notification of the need to evacuate, teachers should instruct students to remain calm and quiet, and depart the building in an orderly fashion according to previously established evacuation routes, or alternate routes as instructed.

1. Building occupants will be notified to evacuate the building by one of the following means depending upon the nature of the emergency:
 - a. Fire Alarm
 - b. Carbon monoxide (CO) Alarm
 - c. Intercom System
 - d. Verbal or Written Notification

Westhill Central School District
District-wide Safety Plan

STANDARD EMERGENCY RESPONSE PROCEDURES - 155.17 (c)(1)(xv) – Cont'd

2. Upon receiving an evacuation notice, faculty and staff shall survey their areas and evacuation routes for hazards in order to ensure a safe and expeditious evacuation.
3. The normal evacuation route(s) for students, faculty and staff for each school shall be specified in the Building Level Emergency Response Plan and included in the Emergency Response Bag "Gotta Go Bag". Normal evacuation routes will also be posted in each room.
4. Teachers are to bring their Daily Attendance Records with them. Attendance shall be taken upon evacuating and again if relocated to an alternate site. Teachers may be asked to turn in their Attendance Roster to the Building Administrator for use at the Command Post.
5. Normal evacuation routes will be used unless the emergency prevents use of exits and/or corridors. Alternate routes may be announced using the school's intercom system. The intercom system shall not be used in situations that may endanger students/staff (e.g., barricaded gunman). In the event of power failure, the Building Administrator can direct ancillary staff to communicate alternate evacuation routes.
6. Suspicious items found must be left alone and immediately reported to the Building Administrator and/or emergency service personnel.
7. Persons evacuating should remain calm and orderly in order to prevent panic and confusion.
8. Elevators may not be used for evacuation purposes unless approved by the Building Administrator or emergency personnel.
9. All persons shall proceed to the designated Assembly Area and remain there until further notice.
10. Teachers must take attendance once in the designated Assembly Area, and are to notify the Building Administrator if a student is not present.
11. Any time teachers have to relocate their class, attendance should be taken before departure and upon arrival. If students are to be evacuated off-campus, teachers are to take attendance before students begin loading on the buses and once the buses are loaded, to assure that all students are accounted for.
12. Occasionally, there may be a need to relocate students from the Assembly Area to a predetermined Relocation Center. If evacuation is ordered beyond the Assembly Area, students will be evacuated by bus either to their homes or a safe location. The decision to evacuate the Assembly Area will be made by the Incident Commander upon consultation with the Superintendent.
13. Students will not be allowed to go home on their own, i.e., walking or in personal vehicles. A parent or a pre-arranged surrogate may sign a Student Release Form and pick up their child at the designated reunification site.
14. The School Nurse should have a medical alert list and supplies readily available at all times. For supplies not on hand, the School Nurse will be prepared to make arrangements to provide medical assistance at the relocation site or along the evacuation route as necessary in coordination with the Building Administrator and the Incident Commander.
15. Building Administrators will follow directions received from the Superintendent and/or the Incident Commander. Principals will determine when staff may be permitted to leave after their students have been safely released and they are no longer needed for emergency duties.

Westhill Central School District
District-wide Safety Plan

STANDARD EMERGENCY RESPONSE PROCEDURES - 155.17 (c)(1)(xv) – Cont'd

B. EVACUATION OF STUDENTS WITH DISABILITIES, STAFF AND FACULTY

In the event of an evacuation, special care must be taken to ensure that persons with disabilities are safely transported out of the building. Each Building Level Emergency Response Plan shall have a list of students with special needs and the persons who have been designated to assist them.

1. An Assisted Evacuation Plan is in the Building Level Emergency Response Plan. This plan should include every child or staff member who has limited mobility and will be reviewed as necessary (i.e.) when students and personnel change.
2. In case of an Emergency where evacuation or a long-term stay on-site is required, the Director of Special Education and designated staff will respond to the Relocation Center or to the designated Assembly Area to assist with students with special needs and staff who serve them.
3. If coordinated services are required from outside agencies that specialize in dealing with students with disabilities, the Director of Special Education and or designated staff will act to facilitate the use of such groups.

C. SHELTERING

Not all Emergencies will require building occupants to get out and go somewhere else. A **sheltering procedure** is appropriate for situations when it is necessary to hold students in an inside Assembly Area temporarily during an Emergency until things can be returned to normal or dismissal can be arranged. Protocols for a sheltering response for each school building are in the Building Level Emergency Response Plans. General procedures are as follows:

1. Upon receiving instruction from local, county or state governmental emergency response agencies the Superintendent shall notify the Building Administrator(s) of the need to initiate the Sheltering Plan.
2. If an incident occurs near school and the Building Administrator is the first to be informed, he or she shall make a decision, based upon the nature of the emergency or upon the direction of local emergency commanders, whether to shelter all students and staff inside the school building. The Building Administrator shall inform the Superintendent and the 911 Control Center of the determination.
3. Upon notification of an Emergency or the exercise of a drill, the Building Administrator shall instruct students and staff to report to the designated 'inside' Assembly Area. Faculty are to bring their class roster with them and maintain charge of their class in the Assembly Area unless otherwise directed.
4. During sheltering for certain types of air pollution problems, chemical spills or radiological emergencies, windows should be closed and ventilation systems and outside air intakes should be shut down.
5. The Building Administrator will assign appropriate duties to selected staff members and custodian, to include securing the building
6. Students/staff will remain inside the building until the Building Administrator is advised by the Incident Commander or Emergency Management Authorities to take further action.

Westhill Central School District
District-wide Safety Plan

STANDARD EMERGENCY RESPONSE PROCEDURES - 155.17 (c)(1)(xv) – Cont'd

7. If such procedure necessitates remaining in school after hours, the Superintendent, or designee, will issue a public notice to this effect through the local news media. Parents will be advised as to appropriate responses, including, where to sign-out their child (if appropriate). As necessary, the Superintendent will coordinate the use of district resources in cooperation with the Incident Commander and request assistance from County Emergency Management Office, the American Red Cross and other agencies as appropriate
8. The Building Administrator will keep the teaching staff, the school nurse, the custodial staff, and the cafeteria staff informed.

D. LOCKDOWN

A lockdown procedure is appropriate for situations, which mandate that students remain in one location until authorized to move. The Lockdown procedure is also detailed in the Building Emergency Response Plan. General procedures are as follows:

1. A Lockdown procedure is called when leaving or walking through the building would endanger the health and safety of the students or staff, i.e. dangerous intruder.
2. The Building Administrator or designee will apprise all building occupants of a Lockdown order using a plain language announcement. Students and staff shall remain in their classrooms or work area until the Law enforcement officials and/or Building Administrator open the door.
3. The Building Administrator will contact local 9-1-1 emergency responders and notify the Superintendent.
4. Building staff shall lock their doors and secure students out of the line of sight from the hallway.
5. Parents will be advised as to preferred responses, and are NOT to report to the school to sign out their child. The Superintendent, or designee, will provide information and updates to parents and the media at the media reception area at a predetermined location.

E. LOCKOUT

A Lockout procedure most commonly used when the incident is occurring outside the school building, on or off school property, which allows the school to continue with the normal school day, but curtails outside activity, and allows no unauthorized personnel into the building.

1. The Building Administrator, or person-in-charge, will apprise all building occupants that Lockout procedures are being implemented using a plain language announcement.
2. The Building Administrator will contact local 9-1-1 emergency responders (if not first apprised by law enforcement) and notify the Superintendent.
3. Classroom instruction can continue.
4. Students/staff who are on the school grounds are to return to the school building

Westhill Central School District
District-wide Safety Plan

STANDARD EMERGENCY RESPONSE PROCEDURES - 155.17 (c)(1)(xv) – Cont'd

5. The building administrator will assign selected staff members and/or custodian(s) to secure the building.
6. The main entrance will be monitored. Only AUTHORIZED personnel will be allowed in the building
7. Modify normal dismissal procedures as appropriate.

F. HOLD-IN-PLACE

A Hold-In-Place procedure is most commonly used to clear hallways of students and staff in the event that emergency services or other situations require a quick response through the school. Teaching can still be conducted during this action. Staff and students will be informed Hold-In-Place via the PA announcement. The following procedures will be followed:

1. Once notified of a Hold-In-Place, staff will quickly scan the hallways for their students and bring them into the classrooms.
2. Students will quickly move to their classrooms and stay in place until further notice.
3. Staff will be notified via the PA to release students.

G. EARLY DISMISSAL

An early dismissal is appropriate in the event of a system failure, such as heating, plumbing or electrical failure, that renders the building unsuitable for instructional purposes. Early dismissal may also be a viable option for other emergency situations as decided by the Superintendent. Each Building Level Emergency Response Plan shall contain provisions on the development of a telephone tree or similar notification for communications with parents or guardians regarding the early dismissal. That information is detailed in the Building Level plans.

1. Early dismissal is available as a building evacuation option for Emergency situations as decided by the Superintendent or designee.
2. Similar to evacuation, early dismissal (or “go home”) is merely a procedure for getting students out of the building and united with their families or with responsible individuals who have been designated by the parents to care for the child in their absence.
3. Emergency contact information will be utilized to facilitate uniting students with their families or with responsible individuals who have been designated by the parents to care for the child.
4. Early dismissal will follow normal dismissal procedures unless the situation warrants otherwise. The Building Administrator or designee, as the Emergency dictates will select alternate dismissal procedures and/or loading areas.

Westhill Central School District
District-wide Safety Plan

3. IDENTIFICATION OF APPROPRIATE RESPONSES TO EMERGENCIES - 155.17 (c)(1)(xv)

A. BOMB THREATS

1. Anyone receiving a bomb threat will call the Building Administrator **and report to the Main Office.** The Building Administrator or designee will make the decision to call 9-1-1. The individual receiving the telephone threat should be present when calling 9-1-1 and/or assessing the threat to give firsthand information.
2. The Building Administrator or designee will notify the District Superintendent's Office.
3. The Building Administrator or designee will use the PA system to request the **BUILDING RESPONSE TEAM to report to the Main Office** to assess the threat.
4. When the Building Response Team is summoned, staff should **inspect their area** for any suspicious objects. TEACHERS will do a visual inspection of their room and report anything suspicious to the Building Administrator.
DO NOT TOUCH ANY SUSPICIOUS ITEM. LEAVE THE AREA AT ONCE AND REPORT THE LOCATION/DESCRIPTION OF ITEM TO PRINCIPAL!
5. The Building Response Team (BRT) will inspect the restrooms, other unchecked areas, exits, hallways and the perimeter of the building. Suspicious objects are to be reported to the Building Administrator.
6. If no suspicious items are found, resume normal operations.

If something suspicious is found, OR if the nature and content of the threat warrants evacuation:

1. The Building Administrator or designee will order an evacuation, notify 9-1-1 Emergency Services and notify their Program Director. Building occupants will be notified to evacuate by an announcement over the PA system. Students and staff will be instructed to dress appropriately and proceed to their normal assembly points outside the building, at least 300 feet from the building, using the evacuation route posted for their room unless otherwise instructed.
2. Teachers shall take attendance cards and class lists and verify attendance after evacuation. Missing staff or students will be reported to an administrator.
3. Depending upon the nature of the threat and/or during inclement weather, the Building Response Team will assess inside evacuation areas, Evacuation Plan B or the off-campus shelter location.
4. **DO NOT RE-ENTER THE BUILDING. DO NOT LEAVE YOUR EVACUATION AREA.** The Building Administrator in concert with the on-site Incident Commander, if applicable, will notify staff when it is safe to reoccupy the building or give further instructions.
5. If early dismissal is initiated, the home districts will be contacted and instructed to pick their students up at the dismissal site or off-site shelter location. Attempts will be made to contact parents of young and severely disabled students.
6. The District Superintendent or designee will serve as public relations/media spokesperson. The Superintendent's Office will notify radio and TV stations as deemed necessary to inform parents.

Non-Specific 'County-Wide' Threats:

In the event of an external threat to another school or district, the Building Administrator may receive notice of a 'county-wide' threat either from the District Superintendent's Office or from the Director of Facilities. The Building Administrator will instruct staff to do a check or "sweep" of their rooms and follow the procedures above. Consideration may be given to "sweep" an inside shelter area first for use as a temporary staging area to house building occupants until the remainder of the building is cleared.

Westhill Central School District
District-wide Safety Plan

**IDENTIFICATION OF APPROPRIATE RESPONSES TO EMERGENCIES - 155.17 (c)(1)(xv) –
Cont'd**

B. HOSTAGE SITUATION

If there is a hostage situation, all staff/students/visitors are to take refuge. Follow Lockdown Procedures. If the danger is confined, responding law enforcement agencies may recommend an orderly evacuation of certain sections/areas away from the danger.

Response Action:

- a. Identify hostage situation - first person on the scene.
- b. Notify the Building Principal, who will announce or direct a lockdown.
- c. Call 9-1-1 and follow their instructions.
- d. Inform Superintendent and if available, District Security Personnel of the situation and the actions taken.
- e. Upon arrival of police officials, implement the following response actions as necessary:
 - i. Isolate area of building involved
 - ii. Notify parents and spouses
 - iii. Prepare official response in the event of media inquiries public information statements
- f. The police will determine the termination of the emergency.

C. INTRUDER

If there is an intruder situation, all staff/students/visitors are to take refuge. Follow Lockdown Procedures. If the danger is confined, responding law enforcement agencies may recommend an orderly evacuation of certain sections/areas away from the danger.

- a. Identify intruder situation – first person on the scene.
- b. Notify the Building Principal, who will announce or direct a lockdown.
- c. Call 9-1-1 and follow their instruction for handling intruder(s) and ensuring safety of students and staff.
- d. Inform Superintendent and if available, District Security Personnel of the situation and actions taken.
- e. Based on advice of and/or with police, confront the intruder.
- f. Escort intruder out of the building with the assistance of law enforcement.
- g. Police and Building Principal determine the termination of the contingency.

D. KIDNAPPED PERSON

If there is a kidnapped person situation, all staff/students/visitors are to take refuge and follow Lockdown or Hold-In-Place Procedures. Attendance will be taken to verify missing persons and law enforcement agencies will be contacted to interview potential witnesses to gather information.

- a. Identify kidnapping incident – first person on the scene.
- b. Notify Building Principal, who will announce or direct a lockdown or hold-in-place.
- c. Take attendance and verify missing student(s).
- d. Call 9-1-1, advise them of the situation and follow their instructions.
- e. Building Principal notifies the Superintendent and if available, Security Personnel.
- f. In coordination with police, notify parents or spouses of individuals who are or could be kidnapped. Also, prepare an official response in the event of media inquiries.
- g. Police and Building Principal determine the termination of the contingency.

Westhill Central School District
District-wide Safety Plan

4. PREVENTION AND INTERVENTION STRATEGIES - 155.17 (c)(1)(iii)

The Westhill Central School District operates a number of programs, some at the District and building level, which deal with school safety officers and other security personnel, nonviolent conflict resolution training, peer mediation, and other school safety programs. These programs have specialized components to reduce and eliminate the possibility of student violence. See Section 6 for a list of intervention programs and services currently available at the Westhill Central School District:

A. STUDENT INTERVENTION PROGRAMS

1. The code of conduct prohibits bullying, intimidation and harassment. Students engaging in such behavior are dealt with immediately. Students who are victims of such behaviors are given the necessary support services and their parents are notified.
2. The students are closely monitored by trained staff and any indication of violent behavior, e.g., rumor of weapons, is immediately followed up with the involvement of local law enforcement, social services, mental health services and parents.
3. When students express any suicidal or violent intentions, the staff member alerts mental health services and parents, sometimes leading to hospitalization. Follow-up occurs on the part of the school staff/psychologists with providers of clinical psychological and/or psychiatric care.
4. When there is any suspicion of abuse, appropriate agencies are notified and investigations are initiated. Mandated reporting expectations are honored, always involving the building administrator in concert with the school social worker, school nurse or school psychologist.
5. The programs serving students that provide services include individual counseling, referrals for psychiatric evaluation and/or therapy delivered through private clinicians or the local hospital(s). Services provided by the district include social workers and/or school psychologists meeting with students and families as appropriate.

5. EARLY DETECTION OF POTENTIALLY VIOLENT BEHAVIORS –155.17 (c)(1)(xii)

In order to prevent violence before it begins, staff and students should look for certain warning signs of potentially violent behavior. This information is presented to staff and students in September and is reviewed periodically throughout the school year. The following list was adapted from the International Association of Chiefs of Police, Guide for Prevention of School Violence. Students and staff who notice these signs should notify a teacher or administrator. Administrators should contact parents, counselors, and or law enforcement officials.

A. INDICATIONS OF POTENTIAL VIOLENT BEHAVIOR

Indications of potential violent behavior include the following:

1. Has engaged in violent behavior in the past.
2. Has tantrums or uncontrollable angry outbursts.
3. Continues exhibiting antisocial behaviors that began at an early age.
4. Forms and/or maintains friendships with others who have repeatedly engaged in problem behaviors.
5. Often engages in name-calling, cursing, or abusive language.
6. Has brought a weapon or threatened to bring a weapon to school.
7. Consistently makes violent threats when angry.
8. Has a substance abuse problem.

Westhill Central School District
District-wide Safety Plan

EARLY DETECTION OF POTENTIALLY VIOLENT BEHAVIORS –155.17 (c)(1)(xii) – Cont'd

9. Is frequently truant or has been suspended from school multiple times.
10. Seems preoccupied with weapons or violence, especially associated with killing humans rather than with target practice or hunting.
11. Has few or no close friends despite having lived in the area for some time.
12. Is abusive to animals.
13. Has too little parental supervision given the student's age and maturity level.
14. Has been a victim of abuse or been neglected by parents/ guardians.
15. Has repeatedly witnessed domestic abuse or other forms of violence.
16. Has experienced trauma or loss in his/her home or community.
17. Pays no attention to the feelings or rights of others.
18. Dwells on perceived slights, rejection, or mistreatment by others; blames others for his/her problems and appears vengeful.
19. Intimidates others, or is a victim of intimidation by others.
20. Seems preoccupied with TV shows, movies, video games, reading materials, or music that expresses violence.
21. Reflects excessive anger in writing projects.
22. Is involved in a gang or antisocial group.
23. Seems depressed/withdrawn or has exhibited severe mood or behavioral swings, greater in magnitude than peers.
24. Expresses sadistic, violent, prejudicial, or intolerant attitudes.
25. Has threatened or actually attempted suicide or acts of self-mutilation.

B. INTERPRETATION OF WARNING SIGNS

The fact that a student exhibits the behaviors above does not necessarily mean that such student is violent. Therefore everyone concerned must take precautions that students are not needlessly stigmatized.

6. COMMUNICATION, EARLY DETECTION AND REPORTING OF POTENTIALLY VIOLENT BEHAVIORS - 155.17 (c)(1)(xvi)

The Westhill Central School District is committed to providing appropriate and quality intervention services for its students. Programs and strategies are developed and provided based upon careful assessment of student and community need. The Westhill Central School District currently has School Psychologists, School Guidance Counselors, and School Social Workers available to address situations that arise.

7. RESPONDING TO IMPLIED OR DIRECT THREATS OF VIOLENCE – 155.17 (c)(1)(i)

The District makes continuing efforts to assure that threats of violence are addressed, whenever possible, before any violence actually occurs in the school environment. This protocol is intended to identify credible threats of violence, so that the District administration can address such situations before the threat is carried out. This protocol is applicable during any school-sponsored event or function, held on District property or elsewhere.

A. PROCEDURES

The following procedures are separated into several sections in order to reflect those instances where specific individuals may receive a threatened act of violence:

Westhill Central School District
District-wide Safety Plan

RESPONDING TO IMPLIED OR DIRECT THREATS OF VIOLENCE – 155.17 (c)(1)(i) – Cont'd

1. Any student, upon receiving information that a person is threatening to commit an act of violence, shall:
 - Assume the threat is serious;
 - Immediately report the threat to a parent, guardian, school staff, administrator or law enforcement officer;
 - Be available and cooperative in providing a statement or information, with the understanding that the reporting student will remain anonymous to the greatest extent possible.
2. Any parent or guardian, upon receiving information that a person is threatening to commit an act of violence, shall:
 - Assume threat is serious;
 - Immediately report the threat to a school staff member, school administrator or law enforcement officer; and
 - Be available and cooperative in providing a statement of information, with the understanding that the informant parent/guardian will remain anonymous to the greatest extent possible.
3. Any school staff member, upon receiving information that a person is threatening to commit an act of violence, shall:
 - Assume threat is serious;
 - Immediately report the threat to a school administrator/designee; and
 - Be available and cooperative in providing a statement of information, with the understanding that the informant will remain anonymous to the greatest extent possible.
4. Any school administrator, upon receiving information that a person is threatening to commit an act of violence, shall:
 - Assume threat is serious;
 - Ensure the student making the threat, if said student is on campus, to be immediately removed from the classroom and segregated into a secured area pending further investigation;
 - Immediately notify the designated law enforcement agency and provide them with complete information regarding the information received; and
 - Require that the school staff member, if this is the source of the information, provide immediate written statements regarding the information received
5. Factors to consider when determining whether a threat is credible are listed in the Threat Assessment Report for use by administrators.
6. If it is agreed that the threat is credible:
 - The administrator will immediately consult with appropriate law enforcement
 - The school administrator shall take appropriate action in accordance with the given instructions
 - The administrator will activate student release if necessary
7. If it is agreed that the threat is not credible, the school administrator shall institute any further action deemed necessary.

Westhill Central School District
District-wide Safety Plan

8. RESPONDING TO ACTS OF VIOLENCE – 155.17 (c)(1)(ii)

A. RESPONDING TO ACTS OF VIOLENCE

When an “act of violence” (as defined herein) occurs the incident command system otherwise known as the building response team will follow the protocols established in the Building Level Plan. These include: determining the level of the threat; monitoring the situation; initiate emergency responses as appropriate; contact law enforcement.

B. POST INCIDENT RESPONSE TEAM

1. The Westhill Central School District has established a **Post-Incident Response Team** (formally the Crisis Response Team) comprised of an Administrative Team Leader, School Nurse, School Social Worker, and others who will assist the school community in coping with the aftermath of an Emergency or Serious Violent Incident.
2. The Post Incident Response Team is identified within the Building Level Emergency Response Plans and will be activated whenever an incident occurs.

C. COUNSELING RESOURCES

The following contacts are available to assist Westhill Central School District Students and Staff:

Contact Community Services

Monday-Friday; 8:30 am – 4:30 pm

Emergency Contacts:

Cheryl Giarrusso, Director of Telephone Services:

Work – **251-1400 Ext. 116**

Susan VanCamp, Director of School Based Services

Work – **251-1400 Ext. 122**

Youth Emergency Services: 463-1100 (24 hours/7 days)

Suicide Hotline: 315-251-0600 (Telephone Counseling)

Counseling Resources are outlined in the BLERP and additional mental health services are available through:

Onondaga County Department of Mental Health

315-435-3355

NY Project Hope Emotional Support Helpline

844-863-9314

Substance Abuse and Mental Health Services Administration

(SAMHSA) Disaster Distress Helpline

800-985-5990

National Suicide Prevention Lifeline

800-273-TALK (8255)

Westhill Central School District
District-wide Safety Plan

9. SITUATIONAL / MULTI- HAZARD RESPONSES - 155.17 (c)(1)(xv)

A. GENERAL PROTOCOLS

The Building Level Emergency Response Plans contains specific procedures for each Standard Emergency Responses outlined in Section 3 of this Plan. The procedures begin with the incident command system (or building response team) which involves all the key responders in the building and emergency service providers. When considered appropriate one or more of the following responses will be carried out in the “SHELL” acronym. See Page 3 for definitions.

B. HAZARD SPECIFIC RESPONSES

Confidential procedures for specific emergencies are provided within the Building Level Emergency Response Plans for various contingencies including:

1. Assaults and Fights
2. Biological Agent or Poisonous Substance Threat
3. Bomb Threats
4. Dangerous and/or Armed Persons
5. Fire Alarms
6. Hazardous Material Spill in the Building
7. Hazardous Material Spill Off-Site
8. Medical Needs and Automated External Defibrillators
9. Nuclear Emergency
10. Severe Storm
11. System Failure (loss of power, heat, water, sewer, gas leak, structural)
12. Threats of Violence – Implied or Direct

10. CONTACTING LAW ENFORCEMENT IN AN EMERGENCY - 155.17 (c)(1)(iv)

Project SAVE requires that this Plan contain procedures for reporting actions that constitute a crime to law enforcement authorities. The Westhill Central District continually works with law enforcement to develop a mutually satisfactory protocol for such reporting. Until a formal protocol is developed, the following procedures shall be followed by District personnel:

A. SEQUENCE OF ACTIONS

1. The first person who becomes aware of an emergency will call 911 if necessary, and notify the Building Administrator’s Office.
2. The Building Administrator shall obtain the necessary information including what, where, when, how and the location of any hazard areas and shall cause the appropriate alert notification/evacuation signal(s) to be given.
3. The Building Administrator shall maintain thorough communication links within the school and with outside agencies and personnel:
 - Call 911
 - Call the Superintendent, or designee at 315-426-3272

Westhill Central School District
District-wide Safety Plan

CONTACTING LAW ENFORCEMENT IN AN EMERGENCY - 155.17 (c)(1)(iv) – Cont'd

4. The Reporting Guidelines that are set forth in the Building Level Emergency Response Plans should be implemented depending on the nature of the Emergency.

11. COORDINATING THE USE OF DISTRICT RESOURCES IN AN EMERGENCY - 155.17 (c)(1)(vii & viii)

A. RESOURCES AVAILABLE

Resources are available in the event of an emergency, see Appendix D. The following resources are available in the event of an emergency:

Building Floor Plans	All
Buses	Transportation Center
Pick-up Trucks, Vans, Snowplows	Maintenance Center
Maintenance Tools & Equipment:	Maintenance Center

B. STAGING AND TREATMENT AREAS

Staging and treatment areas will vary depending on the location of the emergency. Administrators, supervisory staff and specific individuals will be trained to contact emergency responders, to identify the location of the emergency and identify appropriate areas for staging and treatment. The 911 Center will direct responding police units to travel to this location, specifying the safest and most practical route of travel. Upon arriving, the appropriate emergency responder will either accept or relocate the established staging and treatment areas.

C. LOCATIONS OF THE INCIDENT COMMAND POST

In the event of a full-scale evacuation of a school, the Incident Command Post will be established at the location specified in the Building Level Emergency Response Plans, or as otherwise directed by the Incident Commander. This location will be used without regard to where the evacuees are going.

In the event the Emergency requires less than a full-scale evacuation of any school the location of the Command Post shall be determined by the Incident Commander. It shall be established in a safe and accessible location within the outer perimeter. Whenever possible, the Command Post should have the availability of land-line telephone communications.

D. PERSONNEL AT THE INCIDENT COMMAND POST

The following District personnel may be summoned to the Incident Command Post during a declared emergency:

1. The Building Administrator or Site Supervisor, or in his or her absence, a designated staff person. He or she shall be designated the Incident Commander until law enforcement or emergency services personnel arrive. He or she shall bring the Emergency Response Bag for the affected school.
2. The Director of Facilities, or in his or her absence, a designated member of the Maintenance and Operations staff. He or she shall bring a radio capable of operating on District radio frequencies.

Westhill Central School District
District-wide Safety Plan

COORDINATING THE USE OF DISTRICT RESOURCES IN AN EMERGENCY - 155.17 (c)(1)(vii & viii) – Cont'd

3. The school Administrator or designee for the involved building shall bring the school's "Gotta Go Bag" See Appendix J.
4. The School Safety Team for the affected building should report immediately to the designated command post unless otherwise instructed.
5. Other personnel as directed by the Incident Commander.

E. DUTIES OF THE SUPERINTENDENT 155.17 (C)(1)(XIX):

1. The Superintendent is designated the **Chief Emergency Officer**. The Chief Emergency Officer or a designated administrator, will represent the Westhill Central School District as part of the staff at the Command Post.
2. The Superintendent or designee will be responsible for acting as liaison between the Incident Commander and the faculty and staff. He or she will act as the representative of the District, will facilitate the District's response to the emergency, and advise the Incident Commander with regard to problems or concerns brought to his or her attention by faculty, staff or students.
3. The Superintendent or designee shall also be responsible for:
 - Mobilizing District personnel and resources as necessary
 - Designating a staff member to organize the District's response as parents or guardians inquire either via telephone or in person as to the health and safety of their children
 - Providing information to District Spokesperson with the approval of the Incident Commander
 - Performing other duties as assigned by the Incident Commander
 - Maintaining an updated list of radio and television station telephone numbers for use in an emergency. A copy of the list has been provided to selected administrators
 - Reviewing and revising this Plan, as necessary, at least once per year and ensuring that any updates to the Plan, including the building specific appendices, are distributed to all holders of the Plan including emergency services agencies
 - Directing that each Building Administrator review the Building Level Emergency Response Plan for his or her school to update any personnel changes.
 - A copy of any personnel changes shall be sent to the Superintendent and included in the Emergency Response Bag/"Gotta Go Bag" at each site.
4. The Superintendent, or designee will maintain contact with the buildings affected by the Emergency. When notified of an Emergency, the Superintendent's office will ensure that Police and Emergency Agencies have been notified as a first priority. The Superintendent's office will also alert the Assistant Superintendent for Business Administration and the Director of Facilities, where appropriate.
5. If an evacuation is ordered and off-site location sheltering is initiated, the Superintendent or designee may request Education Center Office personnel to report to the relocation site to help assist with the arrival of students from the building affected by the emergency.

Westhill Central School District
District-wide Safety Plan

COORDINATING THE USE OF DISTRICT RESOURCES IN AN EMERGENCY - 155.17 (c)(1)(vii & viii) – Cont’d

F. DUTIES OF THE BUILDING ADMINISTRATOR OR SITE SUPERVISOR

1. Review this Plan and the Building Level Emergency Response Plan for your school prior to each school year with the Building Administrator.
2. Provide collaborative support and assistance for Fire and Rescue Personnel.
3. Establish plans for the transport of all staff and students for each school building upon evacuation.
4. Building Administrator or site supervisor's will make arrangements for creating maps or folders which will show the Assembly Area for each school and for determining pick-up of students at each school's designated Assembly Area and delivery of students at each school's designated Relocation Center.
5. Maintain close contact with the Incident Commander at the Emergency Command Post.

G. DUTIES OF FACULTY AND STAFF

In the event of an Emergency, the faculty and staff will have the following duties:

1. Each teacher and non-instructional staff member must immediately notify the Building Administrator whenever a situation arises that threatens the safety of an individual. At no time, should a staff person place themselves at risk and attempt to deal with an Emergency such as a fire or dangerous intruder. It is essential that no time is lost in communicating the existence of an Emergency so outside help can be summoned and the Building Response Team for the school can be alerted to initiate the correct emergency response. It is imperative that the guidelines contained within this plan be followed in the event of an Emergency.
2. All District employees have responsibility to protect and maintain the health, safety, and welfare of students. Staff members may be assigned to accompany and supervise students. In an Emergency, ordinary rules of work hours, work sites, job descriptions and other contractual provisions are subject to State, County, or District directives.
3. Faculty and staff shall, when instructed by the Building Administrator, direct the safe and orderly evacuation of students and lead them to the designated Assembly Area, avoiding any hazard zones.
4. Building Administrators will designate staff to bring the Emergency Response "Gotta-Go Bag" for all emergencies. This bag will go with each Building Administrator for all evacuations (inside, outside and off site). It should be within close reach and accessible at all times, and should be checked and updated regularly. The contents of this bag are addressed in Appendix E but should also contain:
 - **Updated class rosters for each class using the room**
 - **Emergency evacuation (including assisted evacuation) plans**
 - **Names and telephone numbers of crisis team members**

And MAY contain:

- A flashlight and spare batteries
- Latex gloves
- Pen and paper
- Sign with the classroom teacher's name in bold letters
- Spare batteries for two-way radios

Westhill Central School District
District-wide Safety Plan

COORDINATING THE USE OF DISTRICT RESOURCES IN AN EMERGENCY - 155.17 (c)(1)(vii & viii) – Cont'd

5. Special area teachers and non-instructional employees shall report to the designated Assembly Area and help where needed to chaperone or supervise students.
6. Upon arrival at the designated Assembly Area or relocation site, the faculty will be responsible for assisting in identifying missing students. Thereafter, they shall be responsible for maintaining order, providing support, and escorting students to Assembly Areas or relocation sites.
7. In the event that faculty, staff or students cannot be evacuated from an area, the faculty and staff shall take measures to protect the students in place until a rescue can be accomplished.

H. DUTIES OF THE CUSTODIANS

The custodial staff shall follow the direction of the Director of Facilities, the Building Administrator or the Incident Commander depending upon the situation. The custodial staff may be called upon to do the following during an Emergency:

1. Shut down gas, electricity, and/or water if needed depending upon damage to the building. Otherwise, maintain utilities and building systems as directed.
2. Maintain communication and be sure that radio communication is “open” throughout the Emergency situation.
3. Provide support and be alert to needs of staff and students.
4. Cooperate with police, fire and EMS personnel, and provide requested information, advice, assistance, and active support.
5. Secure the building and check to ensure that everyone is evacuated.

I. DUTIES OF THE SCHOOL NURSE

The school nurse for each building shall have the following duties in the event of an emergency:

1. Plan a Treatment Area to handle injuries, and work in advance to be sure there is a procedure to provide care for injured students and staff during any emergency. Collaborate with the Building Administrator to create this plan and ensure that adult help is available, as part of this plan, should the need arise. Remember that this area may have to be located in the designated Assembly area or at a Relocation Center away from the normal supplies at school.
2. Utilize available School Medical Emergency Response Team members in accordance with school's Building Level ERP.
3. Maintain adequate supplies for emergencies. Part of this need will include First Aid Kits that can be taken to the command post or relocation sites should the need arise.
4. In the event of an evacuation, the School Nurse shall be responsible for bringing medical information of students and medications to be dispensed to the designated Treatment Area. There the nurse will assist EMS personnel in evaluating and treating injured persons.
5. Provide collaborative support and assistance for Fire and Rescue Personnel.
6. Maintain a list of emergency medical conditions and needs for all students.
7. Carry out first aid in the assembly area, designated area, and/or the relocation center as needed.

Westhill Central School District
District-wide Safety Plan

COORDINATING THE USE OF DISTRICT RESOURCES IN AN EMERGENCY - 155.17 (c)(1)(vii & viii) – Cont'd

J. DUTIES OF THE DIRECTOR OF FACILITIES OR DESIGNEE

In the event of an Emergency, the Director of Facilities will have the following duties:

1. Mobilize maintenance personnel to assist (where appropriate) the school building affected by the Emergency. If electrical, HVAC, plumbing, and other building concerns need to be addressed because of the emergency, he or she will coordinate the delivery of these services.
2. Be prepared to share blueprints for any and all school buildings to police or Emergency officials whenever needed.
3. The Director of Facilities will also set up:
 - a. A system for retrieving blueprints of our buildings during an Emergency.
 - b. A system for alerting his staff to assignments either during or after any Emergency. This would include possible cleanup duties.
 - c. A procedure for the assignment and use of, powered equipment, trucks, and other heavy equipment from the District to assist as part of any Emergency.
 - d. Radio communications with the building(s) affected by an Emergency, and with local law enforcement so that maintenance efforts are efficiently and safely conducted.
4. Report to the Command Post, bringing any building plans, system operating instructions or other materials that may be of value to Emergency personnel.

K. DUTIES OF SECRETARIAL AND SUPPORT STAFF

As directed by the Building Administrator, the building secretarial and support staff shall take an active role in performing the following tasks:

1. Assist with communications by maintaining the radio and/or phone contact. Alert appropriate agencies and District personnel.
2. Provide information to staff as directed and ensure that enrollment and medical emergency cards are available to proper school officials or rescue personnel.
3. Assist the school nurse, teachers, or other colleagues as directed.
4. Establish and implement a procedure for checking out students to parents or guardians who come to school to take students home. Also, set up an "office" in the Assembly Area if this area is activated.

L. DUTIES OF THE DISTRICT SPOKESPERSON OR PUBLIC INFORMATION OFFICER (PIO)

In addition to the Superintendent's duties in letter E of this section, the Superintendent will be designated as the Spokesperson or the Public Information Officer (PIO) for the district. In any situation where normal school activities are disrupted, it is crucial to recognize the obligation to inform the public of the problem and how the Westhill Central School District is responding to it. The School District will use public information procedures on a regular basis to announce school emergencies, cancellations and dismissals. The Superintendent or designee shall assign a person to serve as District Spokesperson and Spokesperson for the Incident Commander.

Westhill Central School District
District-wide Safety Plan

COORDINATING THE USE OF DISTRICT RESOURCES IN AN EMERGENCY - 155.17 (c)(1)(vii & viii) – Cont'd

The Spokesperson will be responsible for organizing information that is transmitted to the media and to parents during emergencies.

1. The overall functions of the Spokesperson will be:
 - Fact Sheet as needed.
 - To provide correct information to the public, by telephone, media or letter as appropriate, as to what is occurring and District response;
 - To coordinate with other agencies that may be responding to the situation to ensure that the public is receiving a clear and consistent report of official information;
 - To act as a liaison between the media, the public and District administration who are involved in decision making and the operational response to the emergency;
 - To organize the Westhill Central School District response to parents; and
 - To provide for rumor control by keeping a TV set or radio tuned to a news station in Command Center only (not in classrooms and/or public places). The Spokesperson shall verify ALL facts heard and provide updates as appropriate.
2. The Spokesperson shall respond to the designated Media Assembly Area and clearly identify himself or herself to the press as the official Spokesperson for the Incident Commander.
3. All news releases and public statements on behalf of the Westhill Central School District shall be made by the Spokesperson, or with his or her prior approval. Other persons should not submit to interviews or make statements without first conferring with the Spokesperson.
4. The Spokesperson shall NOT provide speculative information or offer opinions with regards to:
 - Causes or motives for the incident
 - Extent of casualties or damage
 - Expected duration of the operation
 - Liability or responsibility for the incident
 - Tactical responses, operations or considerations
5. All information released to the public must be factual or confirmed by the Incident Commander. The Spokesperson shall relay specific inquiries to the Command Post, which will respond to the media through the Spokesperson.
6. The Spokesperson should request that the media direct all parents to the person(s) specified in the School Building Level Emergency Response Plan for information about, and reunification with their children.

Westhill Central School District
District-wide Safety Plan

COORDINATING THE USE OF DISTRICT RESOURCES IN AN EMERGENCY - 155.17 (c)(1)(vii & viii) – Cont'd

M. DUTIES OF THE TRANSPORTATION SUPERVISOR OR DESIGNEE:

In the event of an Emergency, the Supervisor of Transportation will have the following duties:

1. Maintain a roster of vehicle drivers including telephone numbers (home and alternate employment) where they can be reached for recall during an emergency. Part of this plan will be the development of a procedure by which drivers can be called back to perform this service.
2. Maintain a roster of vehicle availability, in district and from outside resources, in order to put vehicles into operation during an emergency.
3. Maintain a list of all students who are handicapped and non-ambulatory that require transportation in a specially equipped bus.
4. Map the safest and fastest route to the pre-determined re-location site(s) for each school. Insure that all vehicle drivers are aware of and familiar with this route.
5. Establish plans for the transport of all staff and students for each school building upon evacuation.
6. Maintain close contact with the Building Administrator or Incident Commander at the Emergency Command Post. The Transportation Center will serve as a hub for centralized communication during an Emergency. Transportation Personnel along with Administrative Staff will assist in every way possible during all Emergencies.

N. DUTIES OF SCHOOL LUNCH DIRECTOR OR DESIGNEE

In the event of an Emergency, the School Lunch Director shall:

1. Prepare a plan for food preparation/distribution according to each possible Emergency where food service might be needed over a longer term.
2. Include in the food preparation/distribution plan the possibility that your school may be used as a Relocation Center and that this will mean additional students/staff to feed beyond the normal number at a school.
3. Communicate fully with the Building Administrator and Head Custodian in their building to provide food service if needed.
4. If food service is not needed, establish a way by which members of the building's food service team can assist other colleagues (secretaries, nurse, teachers, etc.).
5. If there is damage to equipment or kitchen/dining room/freezer-refrigerator/food storage, assess damage or loss and report status of the operation to the Building Administrator.
6. Prepare a plan for food preparation/distribution according to each possible emergency where food service might be needed over a longer term.

12. EMERGENCY ASSISTANCE FROM OTHER GOVERNMENTAL AGENCIES – 155.17(c)(1)(v)

In an Emergency, an appropriate responsible staff member will contact the 911 center for fire, EMS, or law enforcement response. In the event of a broad scale Emergency, it may become necessary to contact local governmental agencies such as the Highway Department or the Onondaga County Emergency Management Office for assistance as dictated by the situation, see Appendix B, "Emergency/Agency Telephone Numbers" for a listing.

Westhill Central School District
District-wide Safety Plan

13. INTER-AGENCY ADVICE AND ASSISTANCE – 155.17(c)(1)(vi)

In the event of an Emergency, the Superintendent of Schools will contact the following agencies as dictated by the situation:

New York State Police	911
Onondaga County Sheriff	911
Poison Control Center.....	1-800-222-1222
NYS DEC Spill Hotline.....	1-800 457-7362

14. INTERNAL AND EXTERNAL NOTIFICATIONS – 155.17 (c)(1)(ix & x)

A. DUTIES OF THE SUPERINTENDENT

Upon notification or declaration of a local or state emergency the Superintendent, or designee, will contact all the Westhill Central School District locations to communicate emergency information and instructions and shall act as the Public Information Officer for all emergency response agencies within the District, and shall address all news media. See Appendix C for more information.

1. STATE EDUCATION DEPARTMENT

The Superintendent will be responsible for notifying The New York State Education Department, as soon as possible whenever the emergency plan results in the closing of a school building within the Westhill Central School District (except routine snow days).

2. NOTIFICATION OF OCM BOCES DISTRICT SUPERINTENDENT

The Superintendent of Schools will be responsible for notifying the Office of the District Superintendent of the Onondaga-Cortland-Madison Board of Cooperative Educational Services, at 1-315-433-2602, as soon as possible whenever the emergency plan results in the closing of a school building within the District (except routine snow days).

B. PARENTS & GUARDIANS NOTIFICATION

At the start of the school year or when students enroll the following is provided to and obtained from parents or guardians:

- Notification that the child may be sent home early in the event of emergency;
- The name and telephone number of employers or alternate contact information at which to contact parents in the event of early dismissal;
- Alternate plans and/or contacts for the child's welfare if neither parent can be informed of early dismissal or emergency dismissal; and
- Special students' needs: medical and other.

C. COMMUNITY NOTIFICATION

The Superintendent or designee shall provide selected administrative staff with a list of radio and television station telephone numbers for use in an emergency. During a local or state emergency, the Superintendent or a designated spokesperson shall act as the chief communication liaison for all emergency response agencies within the Westhill Central School District, and shall address all news media.

Westhill Central School District
District-wide Safety Plan

INTERNAL AND EXTERNAL NOTIFICATIONS – 155.17 (c)(1)(ix & x) – Cont’d

The Superintendent or designee shall provide selected administrative staff with a list of radio and television station telephone numbers for use in an emergency. During a local or state emergency, the Superintendent or a designated spokesperson shall act as the chief communication liaison for all emergency response agencies within the Westhill Central School District, and shall address all news media.

During an Emergency, parents will be anxious for accurate information regarding school operations and as to the health and safety of their children.

- The Building Administrator(s) or Site Supervisor(s) shall designate an individual to organize the Westhill Central School District response to parents as they inquire via telephone or in person at designated areas during emergencies.
- The names of any students released shall be communicated to the Command Post.

15. SCHOOL SAFETY PERSONNEL – 155.17(c)(1)(xiv)(xvii)

A. ALL STAFF

In addition to the assigned Safety/Security Personnel the Westhill Central School District training has been provided to instructional, clerical, custodial and other support staff, where we review safety procedures for violence prevention and intervention strategies. In addition, all staff have been given instructions in responding to threats of violence, bomb threats and mail threats/suspicious packages.

General Duties of all staff would include:

1. Inform the administration in a timely manner of problems and potential problems. Report all suspicious conditions, violent incidents and emergency situations to the Building Administrator
2. Supervise students under your charge and monitor behavior during the day
3. Supervise areas in the immediate vicinity of your classroom. Help maintain order in corridors, classrooms, and other areas in the school building or on school property. Provide assistance to other instructors and the Building Administrator as necessary in emergency situations or during student unrest
4. Summon the School Nurse and 9-1-1 emergency responders, as necessary, when medical attention is required
5. May be responsible for security procedures such as checking the condition of classrooms and securing doors and windows after classes have ended.

Westhill Central School District
District-wide Safety Plan

16. MULTI-HAZARD SCHOOL SAFETY TRAINING – 155.17(c)(1)(xiii)

A. TRAINING OF STAFF

1. Specific training shall be provided for school staff who have been assigned specific roles and areas of responsibility in the Building Level Emergency Response Plan. Any person or agency that has been assigned an area of responsibility in this plan should have appropriate training.
2. Training for District staff is conducted throughout the school year. This training includes, but is not limited to Right-To-Know, Hazard Communication, Blood borne Pathogens, CPR and AED training, overview of the Westhill Central School District SAVE Plan and Code of Conduct. This training is conducted annually to insure school staff and students understand emergency procedures and to review any changes to this Plan or the Building Level Emergency Response Plans. The Westhill Central School District coordinates with the Onondaga Sheriff's Department, and the New York State Police, and other local emergency responders to conduct Incident Command Training, Violence Prevention Training, CPR and first Aid courses, as well as additional incident specific programs.
3. Other agencies participating in this Plan (e.g., police, fire, EMS) conduct appropriate training as required.
4. Training can entail short briefings, or presentations related to any aspect of preparedness. The training should convey the importance of everyone's role in implementing an effective school emergency response.

17. SCHOOL SAFETY TRAINING FOR STAFF AND STUDENTS

All staff shall receive annual training on the Emergency Response Plan and shall include, but not be limited to, School Violence Prevention and Mental Health. The training is available via the OCM BOCES website. After completing the training, the individual is required to fill out a form to receive credit. This training is mandated for all staff to be completed by September 15 of each year. New employees hired after the start of the school year shall receive training within thirty (30) days of such hire.

A. RESPONSIBILITIES OF THE DISTRICT

All Building Administrators and Program Supervisors will perform the following tasks with respect to training for staff and students.

1. Review District Safety Plan and the Building Level Emergency Response Plan for their particular building with their staff no later than October 1st of each academic year. Any revisions to the Plan will be distributed to staff at the beginning of each school year.
2. Prepare step-by-step, warning and response actions for specific anticipated emergency situations.
3. Prepare an emergency warning system that is in place and functional, for informing parents, guardians and the community of the actual or impending activation of Emergency Response Procedures by the Westhill Central School District.
4. Prepare education, training, and drills required to assure effective operation of the plan.

B. RESPONSIBILITIES WITH RESPECT TO STAFF

The following tasks shall be performed by the Building Administrators with respect to staff training specifically:

1. Assign emergency responsibilities to staff regarding individual capacities and normal service functions for each anticipated emergency situation.

Westhill Central School District
District-wide Safety Plan

2. Cross-train staff and volunteers so the plan or part of the plan does not become non-functional if one person is absent.
3. Require emergency preparedness training for all students and staff.
4. Adapt Emergency preparedness training to individual capabilities and limitations including persons with disabilities.
5. Provide orientation and annual in-service Emergency preparedness training of staff and volunteers.

18. EMERGENCY DRILLS AND EXERCISES – 155.17(c)(1)(xiv)

A. CONDUCT OF DRILLS

The Westhill Central School District program sites will hold one annual early dismissal and sheltering drill as well as routine fire and lockdown drills. Periodic exercises and drills will also ensure the school staff's ability to effectively respond to emergencies and reveal shortcomings in the emergency plan.

1. Each Building Administrator will make arrangements to conduct the drills for their building. These drills must be conducted in accordance with State Education Department regulations:
 - Conducted at least once every school year;
 - Inclusive of transportation and communication procedures; and;
 - Held with at least a one week notice to parents or guardians
 - Early dismissal drills shall occur not more than fifteen (15) minutes earlier than normal dismissal time.
2. If requested, the Building Safety Team will assist in conducting drills. The Building Safety Team will evaluate the response, with local police and fire departments if possible, in order to improve the overall level of preparedness.
3. Emergency services agencies and the Westhill Central School District will cooperatively conduct meetings to discuss the Building Level Emergency Response Plans. Periodic exercises will assess the emergency responses outlined in the plan and the ability of participants in a simulated emergency. Such training may include "tabletop exercises" where participants do a verbal walk through of an emergency response situation. The School Safety Team for each building is available to assist in coordinating these simulations. This test is intended to reveal and correct any shortcomings within the plan.

B. FIRE DRILLS

A total of twelve drills consisting of eight (8) fire drills and four (4) lock down drills, shall be conducted each year, with eight (8) of any combination occurring before December 31st. At least one (1) of the eight (8) fire drills shall be held during one of the regular lunch periods, or shall include special instruction on the procedures to be followed if a fire occurs during students' lunch period. At least two (2) additional drills shall be held during summer school in buildings where summer school is conducted and one of these drills shall be held during the first week of summer school. The Building Administrator, or designee, shall require those in charge of after-school programs, attended by any individuals unfamiliar with the school building, to announce at the beginning of such programs the procedures to be followed in the event of an emergency. The Building Administrator will make the appropriate local emergency responder officials aware of the timing of these drills. All drills must be taken seriously at all times. From the time the alarm sounds or the announcement until occupants are back in the building or released, there should be no talking during these drills. More information on lockdown procedures can be found in Section 2.D. of this Plan.

Westhill Central School District
District-wide Safety Plan

EMERGENCY DRILLS AND EXERCISES – 155.17(c)(1)(xiv) – Cont'd

In buildings where students are housed, teachers shall implement the following procedures during fire drills:

1. See that doors are unlocked and lights are out before leaving their classroom (if safe to do so).
2. Take class list (if safe) and take attendance (if possible). Report missing students to the Building Administrator after students are safely outside.
3. Move students quickly to the designated exits.
4. Escort the class to a safe distance from the building and remain with students until called back into the building.
5. Be sure students know alternate escape routes from their classrooms.
 - a. Fire exits are marked on the floor plans of every building. Each room must contain a floor plan showing fire exits. All staff must become familiar with them.
 - b. Be sure students know alternate escape routes from the classroom.

19. PLAN DISTRIBUTION AND REVIEW

A. COPIES OF THE PLAN

Copies of this Plan shall be kept in the office of the Superintendent, Assistant Superintendent for Curriculum & Instruction, Assistant Superintendent of Business Administration, Director of Facilities, and Building Administrators. This district safety plan is also posted on the district's website, <https://www.westhillschools.org/teacherpage.cfm?teacher=1103>.

20. IMPLEMENTATION OF SCHOOL SECURITY – 155.17(c)(1)(xi)

Certain procedures minimize or provide early warning of problems when unwanted persons are in a school building. The following procedures shall be implemented to improve security in the buildings include electronic security systems such as security cameras which have been upgraded to enhance school security around the exterior as well as the interior of the buildings.

A. BASIC PROCEDURES

1. All School District employees are required to wear an **employee badge** whenever they are in any the Westhill Central School District facilities, except as exempted for specific safety reasons. This includes all shifts and all levels of employment.
2. When school construction/renovation work is anticipated to occur on regularly scheduled school days, all contractor employees shall wear identification badges.
3. General access to buildings shall be limited to a clearly identified central access. All entrances, except for the main access, shall be locked and secured while classes are in session.

B. VISITOR PROCEDURES

New York State law makes it a misdemeanor for anyone except parent/guardians of children in school to be on school grounds or in school buildings unless on official business. Parent/guardians are always welcome to visit, but must report to the office to obtain permission. All others may visit the school after securing permission. Arrangements for the visit of a resource person should be cleared with the curriculum leader or the principal. There is a large sign for visitors to report to the main office on both of the front corridors.

Westhill Central School District
District-wide Safety Plan

IMPLEMENTATION OF SCHOOL SECURITY – 155.17(c)(1)(xi) – Cont’d

Visitors should adhere to the following procedure:

1. All visitors to the school are required to report to the main office immediately upon entrance.
2. Visitors are to sign in and show proper ID (driver's license) to receive a visitor's pass, which must be worn while in the building. If the visitor is unknown to office personnel or an administrator, identification showing proof of name will be required and scanned through the Raptor System prior to allowing the person to remain in the building. ***Visitors without proper ID will be asked to leave the building.***
3. Visitors are to sign out and return the pass to the office before leaving the building.
4. When parents arrive to pick up a child, they are to report to the attendance office to sign out the student. Students are to be picked up by parents in the main office. Parents are not to go to the classroom to pick up a child.
5. Visitations to classrooms for any purpose require permission from a principal in advance in order to allow teachers the opportunity to arrange their schedules to accommodate such requests.
6. All school-building personnel have the responsibility and authority to question visitors regarding their reasons for being in the building. They may ask the visitor to report to the office if they determine the reason is not legitimate.

C. STAFF RESPONSIBILITIES

1. All staff should be aware of conditions in and around the building and report anything unusual to supervisors. Staff should scan their areas before leaving at night and upon entering in the morning to check for any unusual packages or items. Anything suspicious should be reported immediately to their supervisor or immediately call law enforcement based upon a threat assessment.
2. Upon observing a dangerous or armed person, school staff are not to engage that person but immediately place the building on lockdown and call law enforcement and report their presence to the Building Administrator immediately, if possible. The Building Level Emergency Response Plans contain detailed procedures for dealing with armed or dangerous persons.

21. INDIVIDUAL BUILDING INFORMATION

Each Building Level Emergency Response Plan contains maps and floor plans of the buildings, and information on the number of staff and students in that school.

Walberta Park School	– Grades K-1	School telephone 315-426-3200
Cherry Road Park School	– Grades 2-4	School telephone 315-426-3300
Onondaga Hill Middle School	– Grades 5-8	School telephone 315-426-3400
Westhill High School	– Grades 9-12	School telephone 315-426-3100

Westhill Central School District
District-wide Safety Plan

APPENDIX A

Administrator Telephone Numbers/District-Wide School Safety Team

Chain of Command, Building Response Team

<u>Title</u>	<u>Name</u>	<u>School Extension</u>
Superintendent	Stephen Dunham	315-426-3272
Asst. Superintendent of C & I	Darcy Woodcock	315-426-3272
Asst. Superintendent for Business Admin	Steve Smith	315-426-3278
Director of Facilities	Ed Wittkowski	315-426-3396
WHS Principal	Lee Roscoe	315-426-3102
WHS Asst. Principal	Daniel Dolan	315-426-3102
OHMS Principal	Mark Bednarski	315-426-3402
OHMS Asst. Principal	Kathryn Ta	315-426-3402
CRS Principal	Jeremie Auge	315-426-3302
WPS Principal	Beth Kramer	315-426-3202
Food Service Director	Richard Gunther	315-426-3153
Transportation Supervisor	Michele Rether	315-426-3030
Director of Special Education	Marietta Lachenauer	315-426-3280
Director of Athletics	Jennie Smarrelli	315-426-3102
Director of Information Technology	Katie Harmon	315-308-1846

Westhill Central School District
District-wide Safety Plan

APPENDIX B

EMERGENCY/AGENCY TELEPHONE NUMBERS

<u>Agency</u>	<u>Phone</u>
<u>County Emergency Management Office</u> Onondaga County/Emergency Management Office	315-435-2525
<u>Fire Department</u> Non-Emergency Administrative Numbers: Taunton Fire Department Onondaga Hill Fire Department Solvay Fire Department	911 315-468-1011 315-420-8884 315-468-1710
<u>Ambulance</u>	911
<u>NYS DEC</u> DEC Region 7 Onondaga County NYS DEC Hotline:	 315-426-7519 1-800 457-7362
<u>Police</u> Non-Emergency Administrative Numbers: New York State Police (School Outreach) New York State Police Geddes Police Department – Chief Gillette Onondaga County Sheriff’s Department	911 315-366-6027 (Troop D) 911 315-468-3283 315-435-3036
<u>Health Department</u> Onondaga County Health Department	 315-435-3252
<u>Highway Department</u> Onondaga Highway Department	 315-435-3205
<u>Other Agencies/Utility Providers</u> Poison Control Center Onondaga County Water Authority (OCWA) National Grid (Electric) National Grid (Gas Service) America Red Cross of Central New York Department of Transportation Department of Transportation	 1-800-222-1222 315-455-7061 1-800-867-5222 1-800-892-2345 315-234-2200 315-428-4351 (Regional Director) 315-422-7984 (nights and weekends)
<u>State Education Department</u> Bureau of Educational Management Services Facilities Planning	 518-474-7770 518-474-3906
<u>Hospitals</u> University Medical Hospital Crouse Irving Memorial University Community Campus St. Joseph’s Hospital	 315-464-5540 315-470-7111 315-492-5011 315-448-5111

Westhill Central School District
District-wide Safety Plan

APPENDIX B (continued)

EMERGENCY/AGENCY TELEPHONE NUMBERS (Continued)

Radio Stations

WSYR (570 AM)/WYYY (Y94)	315-472-9797
WHEN (620AM/106RM)	315-457-6110
WBBS (B104.7FM)	315-448-1047
WWHT	
WNTQ	315-421-9393
WSEN (FM92)/WFBL (1050 AM)	315-635-3971
WAER (FM88)	315-443-4021
WCNY (FM91.3)	315-453-2424
WRVO	
WTKW (FM 99.5)	315-472-9111
WJPZ (FM 89.1)	315-443-4689

TV Stations

WTVH (Channel 5)	315-425-5555
WIXT (Channel 9)	315-446-9999
WSTM (Channel 3)	315-477-9400

Contact Community Services

Monday-Friday; 8:30 am – 4:30 pm

Emergency Contact:

Cheryl Giarrusso, Director of Telephone Services:

Work – **315-251-1400 Ext. 116**

Susan VanCamp, Director of School Based Services

Work – **315-251-1400 Ext. 122**

24-hour Counseling Line: 315-251-0600

Youth Emergency Services: 315-463-1100

Westhill Central School District
District-wide Safety Plan

APPENDIX C

**ANNUAL WRITTEN INSTRUCTIONS TO STUDENTS AND STAFF
(Emergency Closing Procedures)**

The Superintendent of Schools, together with each chief school administrator of an educational agency other than a public school located within the school district, shall provide written instructions on emergency procedures in their respective schools for all students and staff. The written instructions shall be distributed by October 1 of each school year to students and staff by any of the following methods:

1. School district newsletter mailed to all district residents.
2. Special mailing to students' homes.
3. Handout for students to carry home.

At a minimum, written information shall include the following information:

1. Various response actions which may be required, such as early dismissal and sheltering, and a description of each.
2. Methods for disseminating information during an emergency (Radio/TV stations, etc.)
3. A source for additional information.

A decision to close the school for any reason originates with the superintendent, who notifies the administrators about 5:30 a.m. If there is doubt in your mind as to whether or not school will be in session, listen to the radio/TV stations listed below beginning at 6:00 a.m. Don't call; they will not give you the information over the phone; but listen to their news bulletins that always include emergency school closings. The District Office always makes the contact with the radio stations.

Items relative to closing school:

1. It should be understood that when school is cancelled due to inclement weather this automatically cancels all activities scheduled for our students on that day.
2. Upon return, we assume the schedule of the day missed.
3. During snow days, all main doors are locked. If you desire access to the building, telephone ahead of time to make arrangements.

Radio

WSYR 570 AM – Syracuse
WAQX 95X/FM 93Q – Syracuse
WHEN 620 AM /107.9 FM – Syracuse

Television

WSTM Channel 3 – NBC - Syracuse
WTVH Channel 5 – CBS - Syracuse
WSYR Channel 9 – ABC - Syracuse
NEWS 10 Now Channel 10 - Syracuse

Westhill Central School District
District-wide Safety Plan

APPENDIX D

RESOURCES AVAILABLE WITHIN DISTRICT

Mark the location of the following resources with an X:

Resources	Building			
	WPS	CRS	OHMS	WHS
Telephone System	X	X	X	X
Zoned Fire Alarm System	X	X	X	X
Public Address System	X	X	X	X
Nurses' Office/ and First Aid Supplies	X	X	X	X
Public Bus Route				
Potable Water	X	X	X	X
Fire Extinguisher	X	X	X	X
Electric Generator	X	X	X	X
Battery Backup System	X	X	X	X
Water Supply--Fire Hydrants	X	X	X	X
Food Storage:	X	X	X	X
Eye Wash Device	X	X	X	X
Blankets, Cots	X	X	X	X
Gasoline Fuel Storage				X
Emergency Two Way Radio				
Flashlights	X	X	X	X
Batteries	X	X	X	X
Maps—School Dist. Area	X	X	X	X
Bull Horns	X	X	X	X
Building Floor Plans	X	X	X	X
Kitchen, Cooking and Eating Utensils	X	X	X	X
Gotta Go Bags	X	X	X	X

Note:

WPS – Walberta Park

CRS – Cherry Rd School

OHMS – Onondaga Hill Middle School

WHS – Westhill High School

APPENDIX E

EMERGENCY RESPONSE BAGS or “GOTTA GO BAGS”

“Gotta Go Bags” are school emergency bags that are filled with supplies that may be needed in the event of an emergency. Emergencies may involve classrooms, or a whole school depending on the type and extent of the emergency. The emergency may be just an evacuation of the building to setting up operations for a longer duration (days to weeks). A minimum of two bags are in each school building; an office or administration bag is the school level gotta go bag and an emergency bag for the school nurse. Classroom teachers may have a specific gotta go bag or emergency folder as well.

1. Office/Administration Emergency Response Gotta go Bag:

- Updated class rosters for each classroom
- Emergency Phone Numbers (District as well as outside Resources)
- Pen and paper
- Parent Reunification forms or equivalent
- Emergency evacuation (including assisted evacuation) plans with room numbers on it (multiple (10) copies for responders)
- Names and telephone numbers of the Building Level School Safety Team Members and Post Incident Response Team members
- The Building Level Emergency Response plan or excerpts from it.
- Other forms or documents the school/district may require

Gotta go bags can also contain optional items such as:

- A flashlight and spare batteries
- Cell phone charging cords/adaptors
- Latex gloves
- Sign (or materials for making a sign) with the classroom teacher’s name in bold letters
- Two-way radios and Spare batteries

2. School Nurse Gotta Go Bag:

- Updated student attendance list
- Medical Team Phone numbers
- Medical information cards on each students (or students with medical needs)
- Daily medications to include Epi-Pens
- AED
- First Aid Kit/supplies
- Latex gloves

3. Optional Classroom “gotta go bags” or emergency folders for teachers:

- Updated class rosters/attendance lists for each classroom
- Books or coloring paper

Westhill Central School District
District-wide Safety Plan

APPENDIX F

NON-PUBLIC SCHOOLS AND DAY CARE CENTERS

<u>School/Center Name</u>	<u>Contact Person</u>
Learn As You Grow, Solvay 120 N. Orchard Rd. Solvay, New York 13209 315-487-0821	Vicki Schlenker, Director
Parkview Junior Academy 412 South Avery Ave Syracuse, NY 13219 315-468-0117	Kimberly Kaiser, Principal
Peanut Butter Nursery 126 S. Terry Rd Syracuse, NY 13219 315-488-0284	Karen Delano & Jennifer Gilmartin

Westhill Central School District
District-wide Safety Plan

APPENDIX G

RED CROSS AGREEMENT

Agreements have been made between the American Red Cross and the Westhill School District in the event of an emergency.

(On file in Superintendent's Office)

APPENDIX H

SCHOOL RESOURCE OFFICER AGREEMENT

AGREEMENT made this ____th day of _____, 2022, by and between the Westhill Central School District (the "District"), a municipal corporation organized under the laws of New York State with offices at 400 Walberta Road, Syracuse, New York 13219 (the "District") and TBD, ("School Resource Officer"), referred to individually as the "Party" and collectively as the "Parties."

RECITALS

WHEREAS, the District wishes to employ a School Resource Officer to promote the goal of ensuring a caring, safe, respectful, and orderly learning environment in its schools; and

WHEREAS, TBD, a retired law enforcement officer, has the requisite experience and abilities, and is willing to perform all of the services and duties pertinent to the position of School Resource Officer within the District; and

WHEREAS, the Parties desire to enter into a written agreement (the "Agreement") which will cover the salary, benefits, terms and scope of duties, and conditions of employment for the School Resource Officer position;

NOW, THEREFORE, in consideration of the mutual promises herein contained, the parties agree as follows:

1. Term and Termination

The Term of this Agreement shall be September 1, 2022 to June 30, 2023. This Agreement may be terminated at any time by the District upon the giving of thirty (30) days' written notice to TBD, with or without cause. In the event this Agreement is terminated, compensation will be made to TBD for all costs actually incurred in performing the services to the date of termination, and the District shall have no additional obligation to TBD.

2. Nature of Employment

TBD shall be an employee of the District. TBD 's employment shall be subject to any restrictions and limitations put in place by the retirement system of which he is a member, and/or any waiver of such restrictions or limitations obtained pursuant to Sections 211 and 212 of the New York State Retirement and Social Security Law. TBD shall generally work in the District's schools on regular school days. TBD may also be requested to work at District events that take place outside of normal school hours, as needed. TBD shall be employed as a School Resource Officer in the District for no more than forty (40) hours per week.

Westhill Central School District
District-wide Safety Plan

3. Benefits and Salary

The salary and benefits provided by the District to TBD, including the standard and overtime hourly rate of pay, shall be defined in the "Schedule of Salary and Benefits" attached hereto as "Addendum A."

Salary and benefits shall be based on the ten (10) months per year that TBD will be scheduled to work in the District's schools.

4. Work Activities and Duties of the School Resource Officer

- a. Protect the school's safe environment and maintain an atmosphere where students, teachers and staff feel safe enough to learn. Such duties may include, but are not limited to the following:
 - i. Walk through public buildings or grounds on a regular or scheduled basis to detect fire, theft, vandalism, illegal entry, equipment failures or any suspicious findings to protect the property from threat, harm or theft;
 - ii. Report any and all suspicious activity or illegal activity on an immediate basis as required in an emergency;
 - iii. Examine doors, windows, gates and locks to determine their security and close or lock doors, windows or fire doors according to prescribed routines, to deter criminal activity or accidental loss;
 - iv. Question people who appear to be loitering to determine their reasons for their presence; may order those without legitimate purpose to leave the premises;
 - v. Provide intervention between students and/or staff using appropriate techniques to calm and control situations;
 - vi. Enforce all governing New York State and federal laws, rules, and regulations and assist schools in meeting requirements mandated by New York State law;
 - vii. Report all violations of law, school rules, regulations or policies to District's administration; and
 - viii. Advise the District's administration of any circumstances or situation that may create any potential harm to persons, or damage to, or loss of property.
- b. Assist in the investigation of criminal activity occurring on school campuses in conjunction with the school administrators in accordance with New York State Law and School District policy.
- c. Work with classroom teachers, administrators and other faculty members, as an educator, to present information and answer questions on a variety of topics, including the law, drugs, safety, crime prevention, violence prevention, concepts of safety, traffic laws, general law and crime prevention techniques. These presentations will help increase student awareness and understanding of laws and personal safety.
- d. Serve as a valuable part of the school staff and an important link between students, police agencies and the community.
- e. Provide a presence in the School District in order to promote and provide an atmosphere of enhanced school safety for faculty, staff, students, and school visitors.
- f. Provide a law enforcement resource to students, teachers, school administrators, and parents, so as to:
 - i. Increase student awareness about crime prevention, Internet safety, conflict resolution, violence prevention, restorative justice, and peer mediation;
 - ii. Increase school faculty and staff awareness about policies and procedures for preventing/responding to incidents of violence and other threats to school safety;
 - iii. Facilitate crime prevention, law enforcement, and security consultation;
 - iv. Build lines of communication and promote positive attitudes between students and law enforcement;

Westhill Central School District
District-wide Safety Plan

- v. Provide a confidential counseling resource to students who may be experiencing a variety of school, family, or social problems;
- vi. Pro-actively address problems and pressures as they relate to students before such problems manifest into socially and legally unacceptable behavior. These problems may involve the use of alcohol, drugs, and tobacco. They may also involve peer pressure, gang activity, and sexual activity;
- vii. Provide a positive role model to the students; and
- viii. Provide education in law enforcement, as requested and appropriate.
- g. Act as a liaison with local law enforcement.
- h. Present an annual report to the Board of Education at a mutually agreeable regular meeting.
- i. The School Resource Officer shall not enforce school rules or policies or act as a school disciplinarian. Matters of school discipline shall be referred to the appropriate building principal.
- j. The School Resource Officer shall not detain or question students about their immigration status.
- k. All of the obligations of the School Resource Officer as required under this Agreement shall be met without discriminating on the basis of race, color, sex, national origin, language status, disability, religion, sexual orientation, or membership in any other protected class.

5. Duties of School District

The District shall provide the School Resource Officer with the following materials and facilities, which are deemed necessary for the performance of the School Resource Officer's duties:

- a. Access to a properly lighted office which office shall contain a telephone which may be used for general business purposes;
- b. A location for files and records which can be properly locked and secured;
- c. A desk with drawers, a chair, work table, filing cabinet and office supplies; and
- d. Access to a computer and/or secretarial assistance.

6. Compliance with Law and Access to Records

Notwithstanding any other provision of this Agreement, the School Resource Officer shall comply with all applicable federal, state and local laws, rules and regulations, including, without limitation, those relating to the confidentiality of student records; and shall comply with all applicable District policies, rules and regulations.

7. Firearm on School Grounds

Subject to approval by the Board of Education, the School Resource Officer is authorized to possess and carry a firearm on school grounds, pursuant to the performance of his duties and responsibilities under this Agreement. This authorization shall be in effect for the duration of TBD 's employment by the School District as a School Resource Officer. This authorization may be revoked by the School District at any time without cause or notice to TBD.

8. Modification

This document constitutes the full understanding of the Parties and no terms, conditions, understandings or agreement purporting to modify or vary the terms of this document shall be binding unless hereafter made in writing and signed by both parties.

9. Non-Assignment

Neither Party shall assign or transfer this Agreement to any other person or corporation without the previous consent, in writing, of the other Party.

10. Severability

In the event any provision of this Agreement shall be or become invalid under any provision of federal, state or local law, such invalidity shall not affect the validity or enforceability of any other provision hereof.

11. Indemnification

It is agreed that the District and TBD shall defend, indemnify and hold each other harmless from any and all liability, damage, claims, demands, costs, damages, suits, judgments, fees, attorneys' fees or loss arising directly or indirectly out of the negligent acts or omissions committed by the District or TBD, respectively, except for any liability, damages, claims, demands, costs, judgments, fees, and attorneys' fees contributed to, caused by or resulting from the negligence or willful misconduct of the other party, its officers, employees or agents.

In accordance with New York State Education Laws §3023 and §3811, the Board of Education shall defend and indemnify TBD against lawsuits for negligence, accidental bodily injury or property damage, provided TBD was acting in the discharge of his duties within the scope of employment under the direction of the Board of Education.

12. Non-Appropriation

Should funds become unavailable or should appropriate governing bodies fail to approve sufficient funds for completion of the services or programs set forth in this Agreement, TBD shall have the option to immediately terminate this Agreement upon providing written notice to the District. In such event, the District shall be under no further obligation to TBD other than payment for cost actually incurred prior to termination and in no event will the District be responsible for any actual or consequential damages as a result of termination.

13. Entire Contract and Incorporation

This Agreement constitutes the entire agreement of the Parties hereto and all previous communications between the Parties, whether written or oral, with reference to the matter of this Agreement, are hereby superseded.

APPENDIX I

Westhill Central School District's Public Employer Communicable Disease Plan



Addendum to the District's Safety Plan

Date of board resolution to adopt plan: August 22, 2022

This plan has been developed in accordance with NYS legislation S8617B/A10832.

Westhill Central School District
District-wide Safety Plan

Promulgation

This addendum to the Westhill Central School District's Safety Plan has been developed in accordance with the amended New York State Labor Law section 27-c and New York State Education Law paragraph m of subdivision 2 of section 2801-a (as amended by section 1 of part B of chapter 56 of the laws of 2016), as applicable.

In accordance with New York Education Law §2801-a(2)(m) and New York Labor Law §27-c, the Westhill Central School District has prepared the instant Public Health Emergency Communicable Disease Plan (the "Plan") to guide the District employees and the community in preparation for and in response to a declared public health emergency involving a communicable disease.

This plan has been presented to all certified representatives of the District's employees, who were provided an opportunity to review the plan and make recommendations in accordance with the law. Specifically, this plan has been presented to:

- Westhill District Education Association
- Westhill Employees' Union
- Teamsters Local 317
- Westhill Administrators' Association

No content of this plan is intended to impede, infringe, diminish, or impair the rights of us or our valued employees under any law, rule, regulation, or collectively negotiated agreement, or the rights and benefits which accrue to employees through collective bargaining agreements, or otherwise diminish the integrity of the existing collective bargaining relationship.

The District publishes this Plan based on the requirements in place at the time of its publication but recognizes it must be flexible in the time of response to a communicable disease. Accordingly, the Plan may be updated over time. The District will comply with all applicable local, state, and federal orders, rules, laws, and regulations (collectively, the "Authority"). To the extent the Authority conflicts with any provisions of these Protocols, the District will comply with the Authority.

The Superintendent is responsible for the oversight of the implementation of this Plan and may designate one (1) or more employees to assist in such oversight. The Superintendent will consult legal counsel for guidance regarding any executive orders, rules, laws or regulations, as needed.

Westhill Central School District
District-wide Safety Plan

Record of Changes

Date of Change	Description of Change	Implemented by

Westhill Central School District
District-wide Safety Plan

Table of Contents

Promulgation.....	1
Record of Changes.....	2
Purpose, Scope, Situation Overview, and Assumptions.....	4
Purpose.....	4
Scope.....	4
Situation Overview.....	4
Planning Assumptions.....	4
Concept of Operations.....	5
Mission Essential Workers.....	6
Essential Positions.....	6
Reducing Risk Through Remote Work and Staggered Shifts.....	7
Remote Work Protocols.....	7
Staggered Shifts.....	7
Personal Protective Equipment.....	8
Staff Exposures, Cleaning, and Disinfecting.....	10
Staff Exposures.....	10
Cleaning and Disinfection.....	12
Employee and Contractor Leave.....	13
Documentation of Work Hours and Locations.....	13
Housing for Essential Employees.....	13

Purpose, Scope, Situation Overview, and Assumptions

Purpose

This plan has been developed in accordance with the amended New York State Labor Law section 27-c and New York State Education Law section 2801-a, as applicable. These laws were amended by the passing of legislation S8617B/A10832 signed by the Governor of New York State on September 7, 2020, requires public employers to adopt a plan for operations in the event of a declared public health emergency involving a communicable disease. The plan includes the identification of essential employees, facilitation of telecommuting for non-essential employees, provision of personal protective equipment (PPE), protocols to support contact tracing, and protocols for emergency housing.

Scope

This plan was developed exclusively for and is applicable to Westhill Central School District. This plan is pertinent to a declared public health emergency in the State of New York which may impact our operations; and it is in the interest of the safety of our employees and contractors, and the continuity of our operations that we have promulgated this plan.

Situation Overview

On March 11, 2020 the World Health Organization declared a pandemic for the novel coronavirus which causes the COVID-19 severe acute respiratory syndrome. This plan has been developed in accordance with amended laws to support continued resilience for a continuation of the spread of this disease or for other infectious diseases which may emerge and cause a declaration of a public health emergency.

The health and safety of our employees and contractors is crucial to maintaining our mission essential operations. We encourage all employees and contractors to use the Centers for Disease Control ([CDC](#)) [Guidance for Keeping Workplaces, Schools, Homes and Commercial Establishments Safe, until and unless it has been superseded by other guidance](#).¹ The fundamentals of reducing the spread of infection include:

- Using hand sanitizer and washing hands with soap and water frequently, including:
 - After using the restroom
 - After returning from a public outing
 - After touching/disposing of garbage
 - After using public computers, touching public tables, and countertops, etc.
- Practice social distancing when possible
- If you are feeling ill or have a fever, notify your supervisor immediately and go home
- If you start to experience coughing or sneezing, step away from people and food, cough or sneeze into the crook of your arm or a tissue, the latter of which should be disposed of immediately
- Clean and disinfect workstations at the beginning, middle, and end of each shift
- Other guidance which may be published by the CDC, the NYS Department of Health, or Onondaga County Health Department.

Planning Assumptions

This plan was developed based on information, best practices, and guidance available as of the date of publication. The plan was developed with the Coronavirus pandemic in mind but will be adapted to

¹ As of the initial publication of these protocols, this document could be found at <https://www.cdc.gov/coronavirus/2019-ncov/downloads/workplace-school-and-home-guidance.pdf>

Westhill Central School District District-wide Safety Plan

other infectious disease outbreaks as needed and/or required by the law. The District publishes these protocols based on the requirements in place at the time of its publication but recognizes it must be flexible in the time of response to a Disease. Accordingly, the protocols may be updated over time. The District will comply with all applicable local, State, and federal orders, rules, laws, and regulations (collectively, the “Authority”). To the extent the Authority conflicts with any provisions of these protocols, the District will comply with the Authority.

The following assumptions have been made in the development of this plan:

- The health and safety of our employees and contractors, and their families, is of utmost importance
- The circumstances of a public health emergency may directly impact our own operations.
- Impacts of a public health emergency will take time for us to respond to, with appropriate safety measures put into place and adjustments made to operations to maximize safety
- The public and our constituency expects us to maintain a level of mission essential operations
- Resource support from other jurisdictions may be limited based upon the level of impact the public health emergency has upon them
- Supply chains, particularly those for personal protective equipment (PPE) and cleaning supplies, may be heavily impacted, resulting in considerable delays in procurement
- The operations of other entities, including the private sector (vendors, contractors, etc.), non-profit organizations, and other governmental agencies and services may also be impacted due to the public health emergency, causing delays or other disruptions in their services
- Emergency measures and operational changes may need to be adjusted based upon the specific circumstances and impacts of the public health emergency, as well as guidance and direction from public health officials and the governor
- Per S8617B/A10832, 'essential employee' is defined as a public employee or contractor that is required to be physically present at a work site to perform their job
- Per S8617B/A10832, 'non-essential employee' is defined as a public employee or contractor that is not required to be physically present at a work site to perform their job

Concept of Operations

The Superintendent of Schools of the Westhill Central School District, their designee, or their successor holds the authority to execute and direct the implementation of this plan. Implementation, monitoring of operations, and adjustments to plan's implementation may be supported by additional personnel, at the discretion of the Superintendent. The Superintendent will consult legal counsel for guidance regarding any executive orders, rules, laws, or regulations, as needed. A copy of the final version of this plan must be published in a clear and conspicuous location, in the employee handbook and on the District's website.

The Superintendent of Westhill Central School District, their designee, or their successor will maintain awareness of information, direction, and guidance from public health officials and the Governor's office, directing the implementation of changes as necessary.

Upon resolution of the public health emergency, the Superintendent of Schools of the Westhill Central School District, their designee, or their successor will direct the resumption of normal operations or operations with modifications as necessary.

Westhill Central School District
District-wide Safety Plan

Mission Essential Workers

When confronting events that disrupt normal operations, the Westhill Central School District is committed to ensuring that essential functions will be continued even under the most challenging circumstances.

Essential functions are those functions that enable an organization to:

1. Maintain the safety of employees, contractors, and our constituency
2. Provide vital services
3. Provide services required by law
4. Sustain quality operations
5. Uphold the core values of the Westhill Central School District

Essential workers must be physically present on-site to effectively operate. The table below identifies the positions or titles that are essential to be staffed on-site in the event of a state-ordered reduction of in-person workforce for the continued operation of each essential function, along with justification for their categorization. Note that there are employees who may be essential for only part of the year or during certain requirements. To the extent these exist, the District has outlined them below; however, individuals may be deemed essential as circumstances dictate and the below list is not exhaustive.

Essential Function	Description of position/title	Justification of consideration for position/title being essential
Office of the Superintendent	<ul style="list-style-type: none">• Superintendent of Schools• Asst Sup't for Curriculum & Instruction• Secretary to the Superintendent	Decision-making and oversight of the educational program.
School Building Management	<ul style="list-style-type: none">• Building Principals• Building Secretary	Accountable for delivery of the educational program and the health & safety of the school building's staff and students.
Information Technology	<ul style="list-style-type: none">• Director of Educational Technology• Network Administrator(s)	Facilitate remote instruction. IT staff member provide support in setting up hardware and software, network management, and help desk support.
Medical	<ul style="list-style-type: none">• School Nurse(s)	Communication and coordination with the Dept of Health
Business Office	<ul style="list-style-type: none">• Asst Sup't for Business Admin• Payroll• A/P• Human Resources• District Treasurer	Process(es): payroll & benefits, order entry, accounts payable, deposits, etc.
Mtce & Custodial	<ul style="list-style-type: none">• Supv of Bldgs & Grounds• Custodial & mtce staff• Grounds	Health and safety
Food Service	<ul style="list-style-type: none">• Director of Food Service• Food Service Worker(s)	Preparation and delivery of school breakfast(s) and lunch(es) to pre-qualified students.
Transportation	<ul style="list-style-type: none">• Transportation Supervisor• Dispatcher• Bus driver• Bus attendant (if necessary)	Assist in the delivery of instructional materials and school breakfast(s) and lunch(es) to pre-qualified students.

Reducing Risk Through Remote Work and Staggered Shifts

Through assigning certain staff to work remotely and by staggering work shifts, we can decrease crowding and density at work sites and on school transportation. Below is a description of how the District will, to the extent possible, (1) stagger work shifts of essential employees and contractors in order to reduce overcrowding on school transportation systems and at worksites, and (2) enable all non-essential employees and contractors to telecommute including, but not limited to: facilitating or requesting the procurement, distribution, downloading and installation of any needed devices or technology, including software, data, office laptops or cell phones, and the transferring of office phone lines to work or personal cell phones as practicable or applicable to the workplace.

Remote Work Protocols

Non-essential employees and contractors able to accomplish their functions remotely will be enabled to do so at the greatest extent possible. Working remotely requires:

1. Identification of staff who will work remotely
2. Approval and assignment of remote work
3. Equipping staff for remote work, which may include:
 - a. Internet capable laptop
 - b. Necessary peripherals
 - c. Access to VPN and/or secure network drives
 - d. Access to software and databases necessary to perform their duties
 - e. A solution for telephone communications: As practicable, the District shall transfer office phone lines to non-essential employees' cell phones. To the extent any employee has administrative support to answer phone lines, this will be maintained through the use of transferring lines as well.

Building principals will generally be responsible for the accountability of staff performing remote duties.

Distribution and installation of devices or technology (including downloading and installation of any software, data, office laptops or cell phones) shall be coordinated by and through the director of educational technology to:

1. Manage the district's work order system to triage outages and issues;
2. Provide prior approval and inventory of instructional software;
3. Provide support and training for remote instruction;
4. Prepare employees to work remotely before a disease is recognized – i.e., setting up capability during initial onboarding and working with existing staff to update capabilities.

Procurement

The District will abide by all state requirements for the procurement of any supplies or items required to facilitate telecommuting for employees and contractors.

Staggered Shifts

The District recognizes that, although employees and contractors labeled as essential must be physically present at the worksite to perform their duties, the hours in which they must be at the worksite will not be identical. Below is a description of how the District will, to the extent possible, stagger work shifts of

Westhill Central School District
District-wide Safety Plan

essential employees and contractors in order to reduce overcrowding on public transportation systems and at worksites.

Implementing staggered shifts may be possible for personnel performing duties which are necessary to be performed on-site but perhaps less sensitive to being accomplished only within core business hours. As possible, management will identify opportunities for staff to work outside core business hours as a strategy of limiting exposure. Regardless of changes in start and end times of shifts, the Westhill Central School District will ensure that employees are provided with their typical or contracted minimum work hours per week. Staggering shifts requires:

1. Identification of positions for which work hours will be staggered
2. Approval and assignment of changed work hours

Upon designation of a disease under these protocols, within five (5) business days the immediate supervisor of each essential employee and/or contractor shall determine the hours during which each essential employee and contractor must be present and the worksite at which the employee or contractor is to be present. To the extent possible, the supervisor shall identify flexibility within these hours and locations. Following this identification for all employees and contractors, the supervisor must submit the list of hours and locations required to the Superintendent of Schools (or their identified designee) for their review.

Upon receipt of the list of hours and locations for each employee and contractor, the Superintendent or their designee will, in turn, review the list and promulgate precise hours for each employee and contractor, adjusting hours as possible to reduce an influx of employees and contractors arriving at similar times to similar locations. The goal of the Superintendent or their designee's oversight is to stagger work shifts and locations to reduce overcrowding. The Superintendent or their designee must not adjust any hours contractually agreed upon within a collective bargaining agreement or employment contract, unless agreed to through a Memorandum of Understanding with all applicable parties. Upon any adjustment or approval of the hours and locations provided to the Superintendent/their designee, the Superintendent or their designee will provide a list of approved information to the immediate supervisor of each essential worker or contractor, and will keep such list in the business office for purposes of implementation of the remainder of these protocols, including disinfection and contact tracing.

Personal Protective Equipment

The use of personal protective equipment (PPE) to reduce the spread of infectious disease is important to supporting the health and safety of our employees and contractors. The identification of PPE shall be determined based on the nature of the communicable disease at hand and may include:

- Face masks (i.e., disposable surgical masks)
- Fit tested respirator masks (N-95 or cartridge style)
- Face shields
- Gloves
- Disposable gowns and aprons
- Eye protection
- Sneeze guards

Westhill Central School District
District-wide Safety Plan

Note that while cleaning supplies are not PPE, there is a related need for cleaning supplies used to sanitize surfaces, as well as hand soap and hand sanitizer. The Coronavirus pandemic demonstrated that supply chains were not able to keep up with increased demand for these products early in the pandemic. As such, we are including these supplies in this section as they are pertinent to protecting the health and safety of our employees and contractors.

Protocols for providing PPE include the following:

1. Identification of need for PPE based upon job duties and work location
 - a. PPE is assigned to staff based on job duty, special need or as assigned by supervisor or physician request.
2. Procurement of PPE
 - a. As specified in the amended law, public employers must be able to provide at least two pieces of each required type of PPE to each essential employee and contractor during any given work shift for at least six months. *(or will be supplied periodically through their supervisor as needed/requested).*
 - b. Public employers must be able to mitigate supply chain disruptions to meet this requirement
 - i. PPE will be procured primarily by the buildings and grounds department or other department(s) as recommended in guidance set forth by the CDC, NYS DOH or Onondaga County DOH.
 - ii. Procurement quantities will be based on recommendations from agencies mentioned above.
 - iii. District will secure multiple vendors for each product so that a constant supply can be maintained during time of high need and limited availability.
3. Storage of, access to, and monitoring of PPE stock
 - a. PPE must be stored in a central location in a manner which will prevent degradation
 - b. Each building will have a designated person(s) responsible for maintaining a limited supply of PPE that's available for immediate distribution.
 - c. The supply of PPE will be monitored to ensure integrity and to track usage rates
 - i. All requests for distribution of PPE are completed through the district's work order management system which tracks shipments to buildings and also help monitor inventory levels.
 - ii. The District will continuously monitor the physical inventory of all PPE and cleaning related products.
 - iii. Minimum quantity thresholds are currently being developed for purposes of replenishment; thresholds are based on the usage trends created during the first several months of school activity.
4. Deployment of available PPE:
 - a. Available quantities and descriptions for use are provided as follows:

PPE Description	Deployment Purpose	Quantity
N-95 Masks	Available to school nurses (requires fit test)	25
Surgical Masks	Available to all school staff and students	500

Westhill Central School District
District-wide Safety Plan

Face shields/gowns	Available to special education staff	75
--------------------	--------------------------------------	----

Staff Exposures, Cleaning, and Disinfection

Staff Exposures

This section outlines the protocols the District will follow in the event an employee or contractor (1) is exposed to a known case of the communicable disease that is the subject of the public health emergency; (2) exhibits symptoms of such Disease; or (3) tests positive for such Disease. These protocols are aimed to prevent the spread or contraction of the Disease in the workplace. They specifically detail the actions to be taken to immediately and thoroughly disinfect the work area of any employee or contractor known or suspected to be infected with the Disease as well as any common area surface and shared equipment such employee or contractor may have touched, and the employer policy on available leave in the event of the need of an employee to receive testing, treatment, isolation, or quarantine.

The District's protocols will not violate any existing federal, state, or local law, including those regarding sick leave or health information privacy.

Staff exposures are organized under several categories based upon the type of exposure and presence of symptoms. The Superintendent of Schools, will be responsible for ensuring these protocols are followed. Following CDC guidelines, we have established the following protocols:

- A. If employees or contractors are exposed to a known case of communicable disease that is the subject of the public health emergency they must, as soon as practicable, notify their immediate supervisor regarding the exposure. Their immediate supervisor will, in turn, report the exposure to the Superintendent of Schools, or their designee. They must not be present at the worksite after their notification of exposure and until cleared by a medical professional in accordance with any CDC, State or County Department of Health guidelines.
 1. Potentially exposed employees or contractors who do not have symptoms should remain at home or in a comparable setting and practice social distancing per current CDC/public health guidance for the communicable disease in question.
 - a. As possible, these employees will be permitted to work remotely during this period of time if they are not ill.
 - b. See the section titled Documentation of Work Hours and Locations for additional information on contact tracing
 2. CDC, New York State Department of Health, and Onondaga County Health Department guidelines for COVID-19 provide that critical essential employees may be permitted to continue work following potential exposure, provided they remain symptom-free and additional precautions are taken to protect them, other employees and contractors, and our constituency/public. As with all exposed employees, they must, as soon as practicable, notify their immediate supervisor regarding the exposure. Their immediate supervisor will, in turn, report the exposure to the Superintendent of Schools.
 - a. Additional precautions will include the requirement of the subject employee or contractor, as well as others working in their proximity, to wear appropriate PPE at all times to limit the potential of transmission.
 - b. In-person interactions with the subject employee or contractor will be limited as much as possible.

Westhill Central School District
District-wide Safety Plan

- c. Work areas in which the subject employee or contractor are present will be disinfected according to current CDC, New York State Department of Health, and Onondaga County Health Department public health protocol at least every hour, as practical. See the section on Cleaning and Disinfection for additional information on that subject.
 - d. If at any time they exhibit symptoms, refer to item B below.
- B. If an employee or contractor exhibits symptoms of the communicable disease that is the subject of the public health emergency, they must disclose they are experiencing a symptom to their immediate supervisor, who shall, in turn, notify the Superintendent of Schools, or their designee, who will ensure these protocols are followed.
 - 1. Employees and contractors who exhibit symptoms in the workplace should be immediately separated from other employees, customers, and visitors. They must immediately disclose they are experiencing a symptom to their immediate supervisor, remove themselves from the workplace (or be removed with assistance from medical personnel, if necessary), and be instructed to remain home and contact their physician.
 - 2. Employees and contractors who exhibit symptoms outside of work should notify their supervisor and stay home, with a recommendation to contact their physician.
 - 3. Employees should not return to work until they have met the criteria to discontinue home isolation per CDC, State or County Department of Health public health guidance and have consulted with a healthcare provider.
- C. If an employee or contractor has tested positive for the communicable disease that is the subject of the public health emergency:
 - 1. Apply the steps identified in item B, above, as applicable.
 - 2. Areas occupied for prolonged periods of time by the subject employee or contractor will be closed off.
 - a. CDC, New York State Department of Health, and Onondaga County Health Department guidance for COVID-19 indicates that a period of 24 hours is ideally given before cleaning, disinfecting, and reoccupation of those spaces will take place. If this time period is not possible, a period of as long as possible will be given. CDC, New York State Department of Health, and Onondaga County Health Department public health guidance for the disease in question will be followed.
 - b. Any common areas entered, surfaces touched, or equipment used shall be cleaned and disinfected immediately.
 - c. See the section on Cleaning and Disinfection for additional information on that subject.
 - 3. Identification of potential employee and contractor exposures will be conducted. The District will work with the local and State Health Department, as applicable, and their school physician to determine necessary contact tracing for those other employees, contractors and individuals who may have had contact with an individual who was exposed or tested positive, along with that individual's exclusion from the worksite. Confidentiality shall be maintained as required by the Americans with Disabilities Act (ADA).
 - a. Employees or contractors excluded from the worksite should not return to the worksite until they have been cleared by their immediate supervisor to do so. To the extent they can continue to effectively work remotely in the interim, they should.

Westhill Central School District
District-wide Safety Plan

- b. Apply the steps identified in item A, above, as applicable, for all potentially exposed personnel.

We recognize there may be nuances or complexities associated with potential exposures, close contacts, symptomatic persons, and those testing positive. We will follow CDC, New York State Department of Health, and Onondaga County Health Department public health recommendations and requirements and coordinate with our local public health office for additional guidance and support as needed.

Cleaning and Disinfecting

CDC/public health guidelines will be followed for cleaning and disinfection of surfaces/areas. Present guidance for routine cleaning during a public health emergency includes:

1. As possible, employees and contractors will clean their own workspaces in the beginning, middle, and end of their shifts, at a minimum.
 - a. High traffic/high touch areas and areas which are accessible to the public/constituents will be disinfected at least hourly.
 - b. Building Custodians are responsible for cleaning common areas; these areas should be addressed on a daily basis – but more frequently as function and events warrant.
2. Staff tasked with cleaning and disinfecting areas will be issued and required to wear PPE appropriate to the task.
3. Soiled surfaces will be cleaned with soap and water before being disinfected.
4. Disinfection will occur in accordance with any current guidance promulgated by the CDC and State Department of Health. If such guidance is not available or provided specific to the Disease, at a minimum, surfaces will be disinfected with products that meet EPA criteria for use against the virus in question and which are appropriate for that surface, and access to those areas will be prevented until such disinfection has occurred.
5. Staff will follow instructions of cleaning products to ensure safe and effective use of the products.

Disinfection

The Superintendent of Schools shall assemble a disinfection team to be charged with the disinfection of worksites and common areas during the time covered under these Protocols. The disinfection team will be comprised of the following individuals: supervisor of buildings and grounds, custodian II, custodian I and custodial worker I. Should a member of the disinfection team request additional protective material, the Superintendent of Schools should endeavor to honor such requests so long as they are not unreasonable or inappropriate in light of the circumstances.

The disinfection team will be charged with:

1. Routine disinfection of all worksites in the District;
2. Routine disinfection of common areas in the District, targeting high-traffic areas; and
3. Targeted cleanings of workspaces belonging to individuals who were exposed or tested positive to the Disease.

Immediately after an employee or contractor who is known or suspected to be infected with the Disease notifies their supervisor of such suspicion or infection, the supervisor shall notify the disinfection team to disinfect the following: (1) the worksite of the employee or contractor; (2) any common area surface the employee/contractor may have touched; (3) any shared equipment the employee/contractor may have touched; and any other particular areas the employee or contractor or their supervisor identifies.

Westhill Central School District
District-wide Safety Plan

During the COVID-19 pandemic, the CDC and New York State Department of Health recommended the following, which the District incorporates into these Protocols unless updated by forthcoming guidance:

1. Closing off areas used by a sick person and not using these areas until after cleaning and disinfection has occurred;
2. Opening outside doors and windows to increase air circulation in the area.
3. Waiting at least twenty-four (24) hours before cleaning and disinfection. If waiting twenty-four (24) hours is not feasible, waiting as long as possible;
4. Cleaning and disinfecting all areas used by the person suspected or confirmed to have the Disease, such as offices, classrooms, bathrooms, lockers, and common areas.
5. Individuals, without close or proximate contact with the person suspected or confirmed to have the Disease, can return to the area and resume school activities immediately after cleaning and disinfection.

Employee and Contractor Leave

Public health emergencies are extenuating and unanticipated circumstances in which the District is committed to reducing the burden on our employees and contractors. The District shall comply with applicable collective bargaining agreements as well as state and federal laws and regulations related to employee leave. This policy may be altered based upon changes in law or regulation, as applicable.

Additional provisions may be enacted based upon need and the guidance and requirements in place by federal and state employment laws, FMLA, executive orders, and other potential sources.

Contractors, either independent or affiliated with a contracted firm, are not classified as employees of the District, and as such are not provided with paid leave time by the District unless required by law.

Documentation of Work Hours and Locations

In a public health emergency, it may be necessary to document work hours and locations of each employee and contractor to support contact tracing efforts. Identification of locations shall include on-site work, off-site visits.

This information may be used by Westhill Central School District to support contact tracing within the organization and may be shared with local public health officials. The use of electronic “Work-Logs” will be employed to document work-hours and activities during scheduled work shifts while working remotely or on specific projects. These logs will be shared or managed by principals and supervisors periodically. The logs will be used as the basis (1) to perform contact tracing for exposed employees and contractors, (2) to outline the provision of any benefits which may be available to certain employees and contractors because of potential exposure.

Housing for Essential Employees

There are circumstances within a public health emergency when it may be prudent to have essential employees lodged in such a manner which will help prevent the spread of the subject communicable disease to protect these employees from potential exposures, thus helping to ensure their health and safety and the continuity of Westhill Central School District’s essential operations.

The District will work with its locality to identify sites for emergency housing for essential employees in order to further contain the spread of the communicable disease that is the subject of the declared emergency.

Westhill Central School District
District-wide Safety Plan

If such a need arises, hotel rooms are expected to be the most viable option. If hotel rooms are for some reason deemed not practical or ideal, or if there are no hotel rooms available, Westhill Central School District will coordinate with the Onondaga County Emergency Management Office to help identify and arrange for these housing needs. The Superintendent of Schools, or his designee, will coordinate this.

Westhill Central School District
District-wide Safety Plan

Addendum "B": Daily Cleaning/Disinfection Log



WesthillCSD

DAILY CLEANING /DISINFECTION LOG

Date:

Building:

***Any issues, or concerns are to be reported to your Supervisor immediately.**

AREA/ROOM NUMBER BEING DISINFECTED	TIME SERVICED	*DAILY DISINFECTION COMPLETED	CUSTODIAL EMPLOYEE NAME	CUSTODIAL EMPLOYEE INITIALS	COMMENTS

***NEW YORK STATE (NYS) REQUIRES REGULAR DAILY CLEANING AND DISINFECTION OF CLASSROOMS, OFFICES, CORRIDORS, CAFETERIAS, GYMS, STAIRCASES, MULTIPURPOSE ROOMS & COMMOM SPACES.**

***DAILY CLEANING AND DISINFECTION WILL INCLUDE: ALL HIGH- TOUCH SURFACES: CLASSROOM DESKS**

& CHAIRS, CONFERENCE TABLES, DRINKING FOUNTAINS, DOOR HANDLES AND PUSH PLATES, LIGHT

SWITCHES, RESTROOM FIXTURES, PARTITIONS AND HARDWARE, BUTTONS ON VENDING MACHINES

AND ELEVATORS, GYM PADDING, PHYSICAL THERAPY EQUIPMENT

***ALL LOGS MUST BE FILED INSIDE THE CUSTODIAN II's OFFICE**

Westhill Central School District
District-wide Safety Plan

Addendum “C”: References

Below is a comparison of New York Labor Law section 27 to the December 3 State Education Department (SED) Memorandum. Portions of requirements in the Labor Law but not SED guidance are identified below in **bold**. Portions of requirements in the SED guidance but not the Labor Law are identified below in *italics*.

The locations of the requirements within the Protocols are identified in the third column.

Labor Law requirements	SED explanations	Reference in plan
A list and description of positions and titles considered essential in the event of a state-ordered reduction of in-person workforce, and a justification of such consideration for each position and title included.	A list and description of positions and titles considered essential in the event of a state-ordered reduction of in-person workforce, as well as a justification for such consideration for each position and title. <i>Note that per NYS Department of Health COVID-19 toolkit guidance, school staff are not essential workers. However, as you are developing the list of essential and non-essential staff functions, you should anticipate how certain positions/titles may be necessary to assist in response to a pandemic or communicable disease outbreak. For example, if schools are directed to provide meals to students and families that are eligible to receive free and/or reduced lunch or to provide child care for children of first responders or health care workers, you may need to designate certain positions/titles as essential for this purpose.</i>	“Mission Essential Workers”
A specific description of protocols the employer will follow in order to enable all non-essential employees and contractors to telecommute including, but not limited to, facilitating or requesting the procurement, distribution, downloading and installation of any needed devices or technology, including software, data, office laptops or cell phones, and the transferring of office phone lines to work or personal cell phones as practicable or applicable to the workplace.	A specific description of protocols the employer will follow in order to enable all non-essential employees and contractors to telecommute including, but not limited to, facilitating or requesting the procurement, distribution, downloading and installation of any needed devices or technology, including software, data, office laptops or cell phones, and the transferring of office phone lines to work or personal cell phones as practicable or applicable.	“Reducing Risk Through Remote Work and Staggered Shifts”
A description of how the employer will, to the extent possible, stagger work shifts of essential employees and contractors in	A description of how the employer will, to the extent possible, stagger work shifts of essential employees and contractors to	“Staggered Shifts”

Westhill Central School District
District-wide Safety Plan

order to reduce overcrowding on public transportation systems and at worksites.	reduce overcrowding on public transportation and at worksites.	
A description of the protocol the employer will implement in order to procure the appropriate personal protective equipment for essential employees and contractors, based upon the various tasks and needs of such employees and contractors in a quantity sufficient to provide at least two pieces of each type of personal protective equipment to each essential employee and contractor during any given work shift over at least six months. Such description shall also include a plan for storage of such equipment to prevent degradation and permit immediate access in the event of an emergency declaration.	Protocols the employer will implement to procure personal protective equipment (PPE) for essential employees and contractors, based upon tasks and needs in a quantity sufficient to provide at least two pieces of each type of PPE to each essential employee and contractor during any given work shift over at least six months. A plan for storage of equipment and access to equipment must be included.	“Personal Protective Equipment”
A description of the protocol in the event an employee or contractor is exposed to a known case of the communicable disease that is the subject of the public health emergency, exhibits symptoms of such disease, or tests positive for such disease in order to prevent the spread or contraction of such disease in the workplace. Such protocol shall also detail actions to be taken to immediately and thoroughly disinfect the work area of any employee or contractor known or suspected to be infected with the communicable disease as well as any common area surface and shared equipment such employee or contractor may have touched, and the employer policy on available leave in the event of the need of an employee to receive testing, treatment, isolation, or quarantine. Such protocol shall not involve any action that would violate any existing federal, state, or local law, including regarding sick leave or health information privacy.	<p>Protocols in the event an employee or contractor is exposed to a known case of the disease, exhibits symptoms of the disease, or tests positive for the disease to prevent the spread or contraction in the workplace. The protocols shall not violate any existing federal, state, or local law, regarding sick leave or health information privacy, and must include:</p> <ul style="list-style-type: none"> -Detailed actions to immediately and thoroughly disinfect the work area, common area surface and shared equipment; and -The employer policy on available leave in the event of the need of an employee to receive testing, treatment, isolation, or quarantine. 	“Staff Exposures, Cleaning, and Disinfection”

Westhill Central School District
District-wide Safety Plan

<p>A protocol for documenting precise hours and work locations, including off-site visits, for essential employees and contractors. Such protocol shall be designed only to aid in tracking of the disease and to identify the population of exposed employees and contractors in order to facilitate the provision of any benefits which may be available to certain employees and contractors on that basis.</p>	<p>Protocol for documenting precise hours and work locations, including off-site visits, for essential employees and contractors. The protocol shall be designed only to aid in tracking of the disease and to identify exposed employees and contractors to facilitate the provision of any benefits which may be available.</p>	<p>“Documentation of Work Hours and Locations”</p>
<p>A protocol for how the public employer will work with such employer's locality to identify sites for emergency housing for essential employees in order to further contain the spread of the communicable disease that is the subject of the declared emergency, to the extent applicable to the needs of the workplace.</p>	<p>Protocol for working with the employer’s locality to identify sites for emergency housing for essential employees to further contain the spread of the communicable disease to the extent applicable to the needs of the workplace.</p>	<p>“Housing for Essential Employees”</p>