



# WESTHILL HIGH SCHOOL

Board of Education Presentation  
February 22<sup>nd</sup>, 2016





ASHLEY MCGRAW

# AGENDA

**OHMS PARENT DROP-OFF**

**HIGH SCHOOL LOCKER ROOMS**

**EXTERIOR TOILET ROOMS**

**ACADEMIC WING 3<sup>RD</sup> FLOOR**

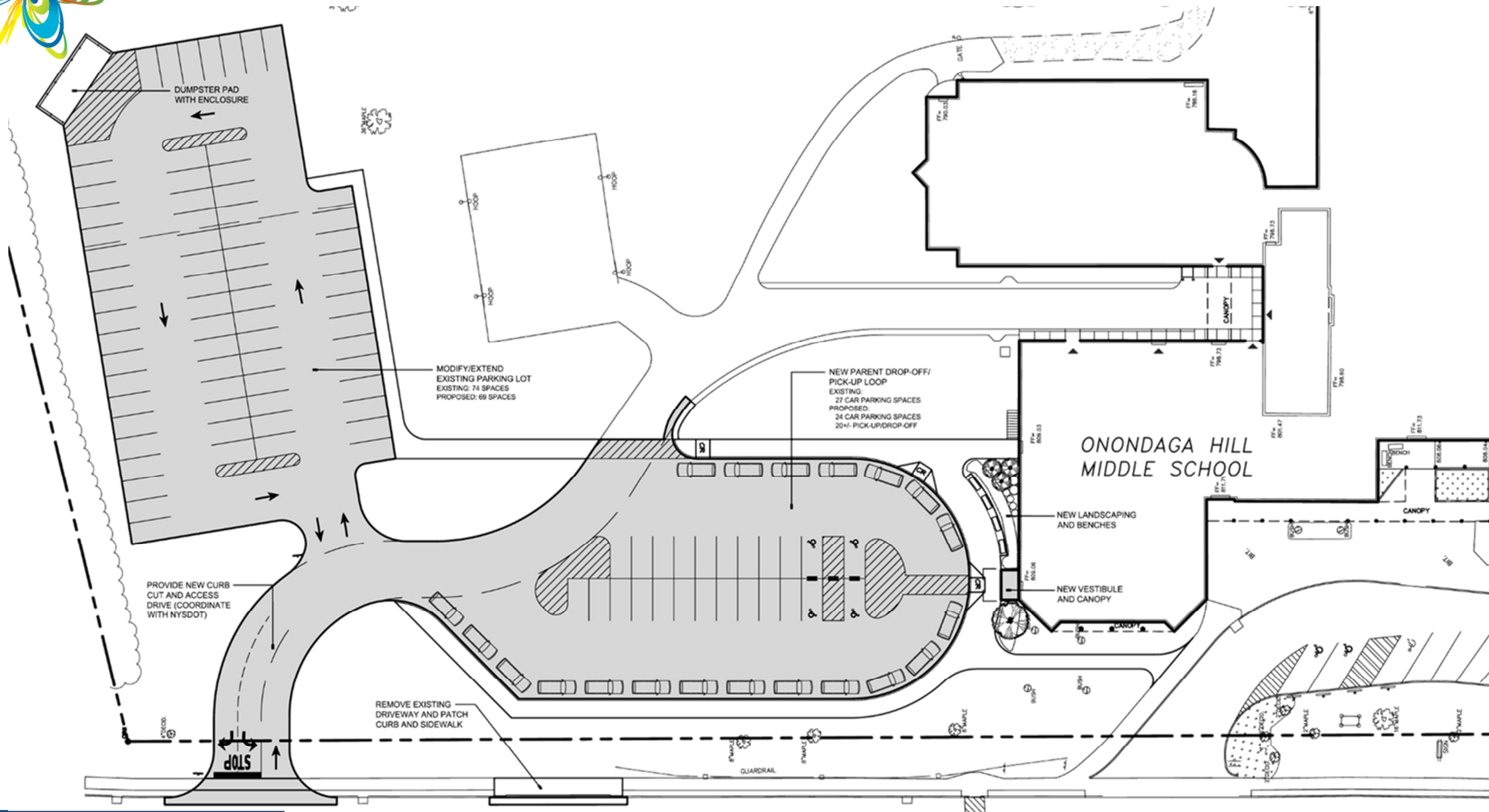
**ACADEMIC WING EXTERIOR**

**SCHEDULE**





ASHLEY MCGRAW



WESTHILL HIGH  
SCHOOL

ACADEMIC WING  
RENOVATION



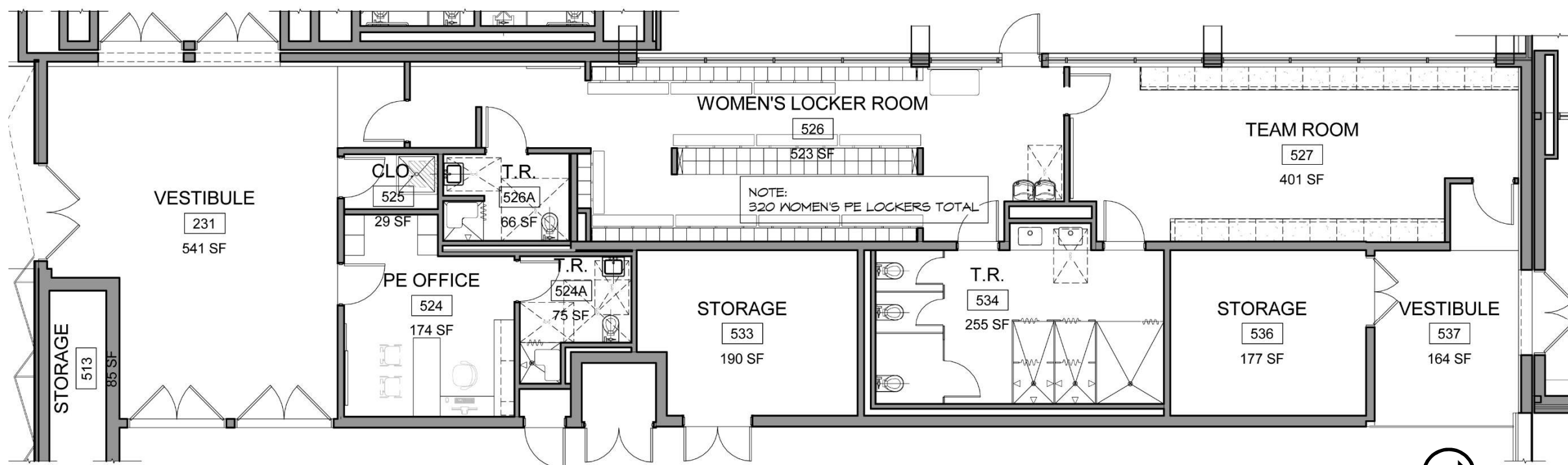
OHMS- DROP OFF



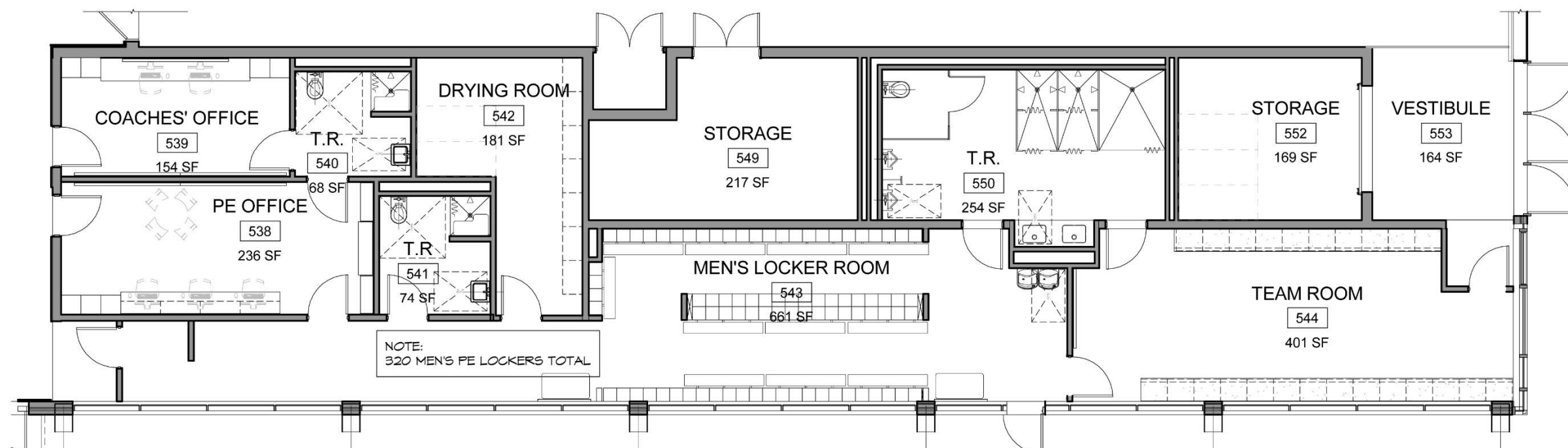
appel  
osborne  
landscape  
architecture



ASHLEY MCGRAW



WOMEN'S LOCKER ROOM



MEN'S LOCKER ROOM

WESTHILL HIGH  
SCHOOL

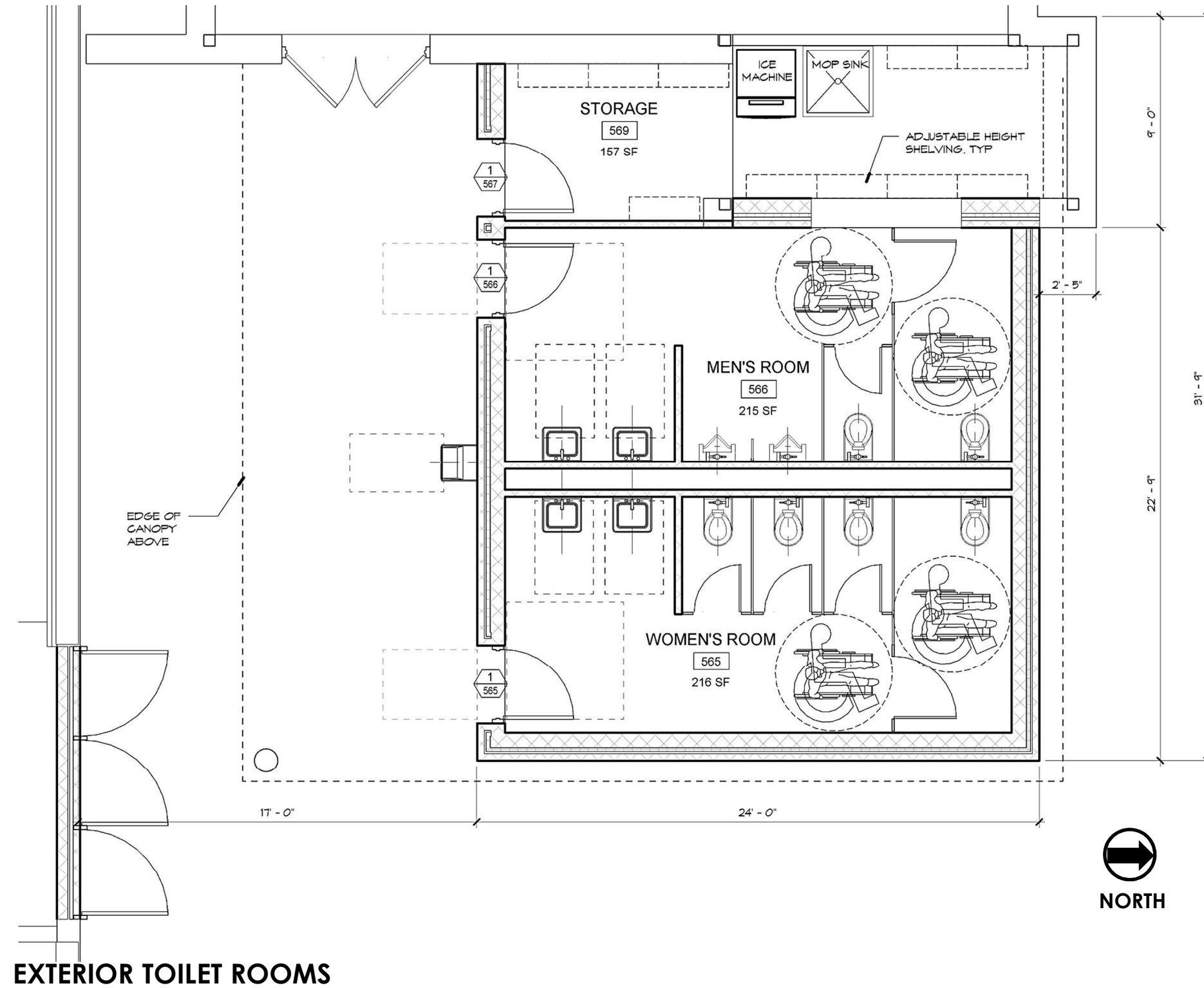
ACADEMIC WING  
RENOVATION



HIGH SCHOOL LOCKER ROOMS

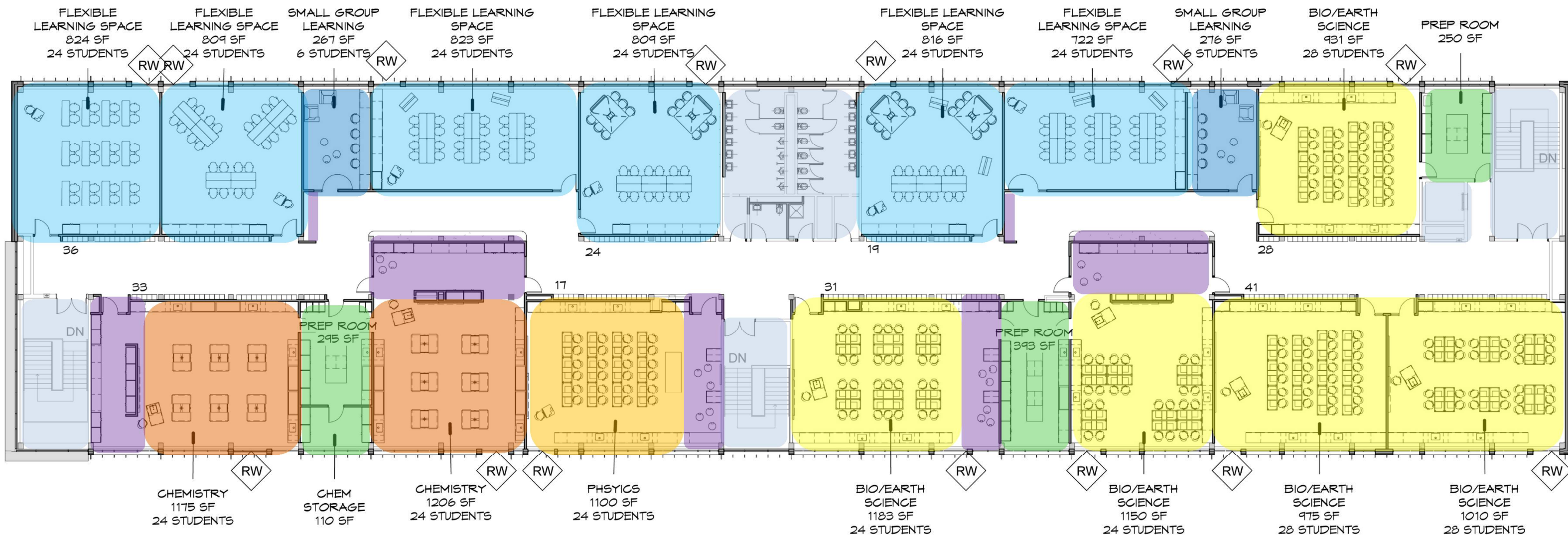


ASHLEY MCGRAW





ASHLEY MCGRAW



## PROPOSED THIRD FLOOR PLAN

296 LOCKERS



NORTH

SPACES	8	SCIENCE LABS
	6	FLEXIBLE LEARNING
	2	SMALL GROUP
	3	PREP ROOMS

 FLEXIBLE LEARNING SPACE

 CHEMISTRY LAB

 SUPPORT FUNCTIONS

 SMALL GROUP LEARNING

 PHYSICS ROOM

 COLLABORATION

 PREP ROOMS

 BIOLOGY/EARTH SCIENCE ROOM

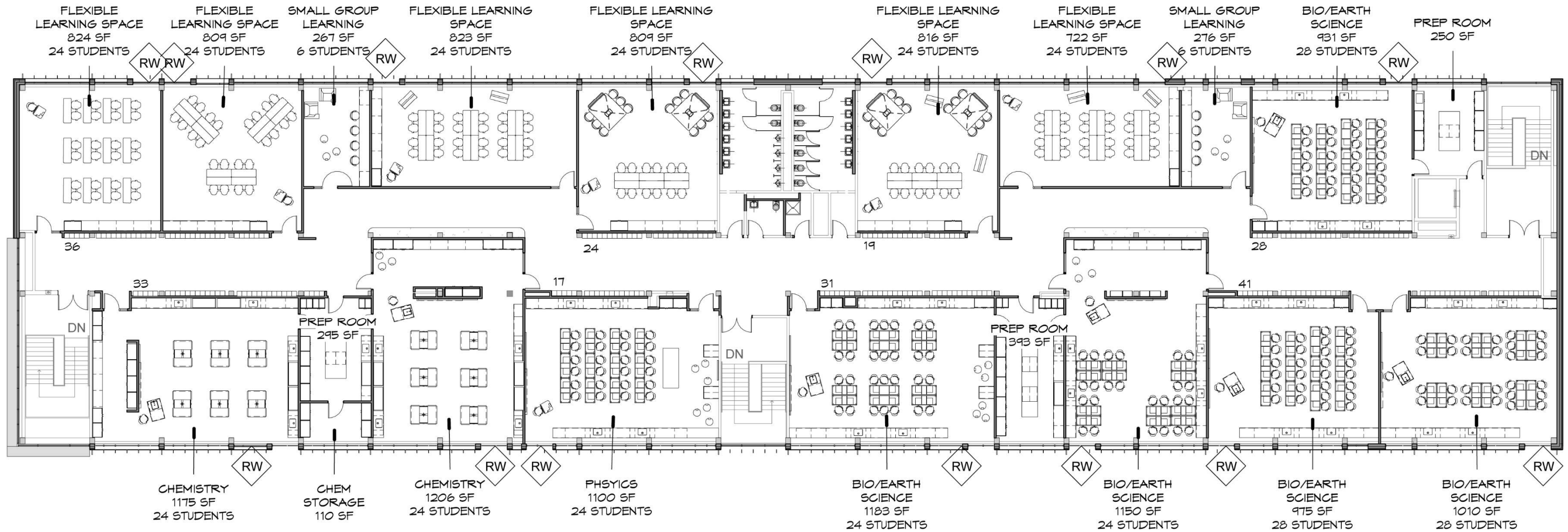
WESTHILL HIGH  
SCHOOL



ACADEMIC WING  
RENOVATION



ASHLEY MCGRAW



## PROPOSED THIRD FLOOR PLAN

296 LOCKERS



NORTH

SPACES	8	SCIENCE LABS
	6	FLEXIBLE LEARNING
	2	SMALL GROUP
	3	PREP ROOMS

WESTHILL HIGH  
SCHOOL

ACADEMIC WING  
RENOVATION

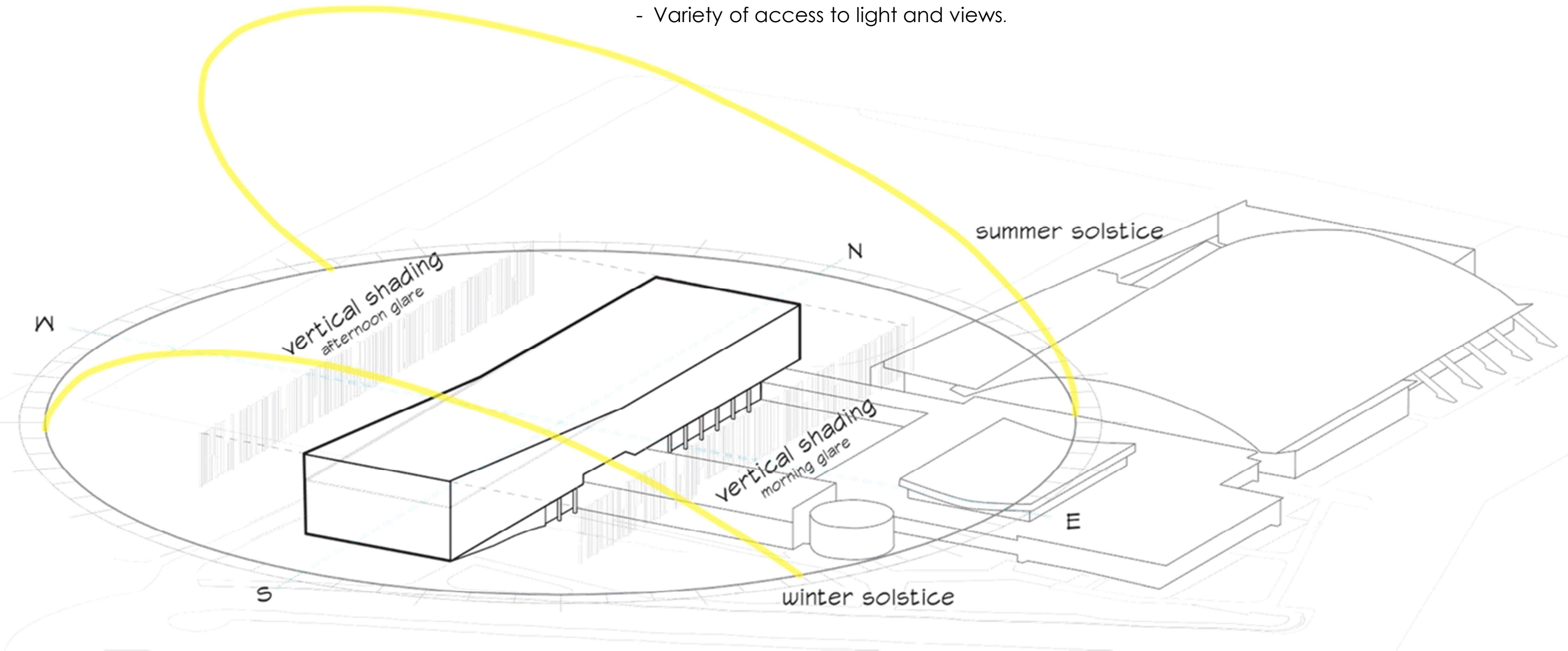




ASHLEY MCGRAW

## Day Light

- East-West Light
  - Shade with vertical fins.
- Provide Views via a level of openness.
- Variety of access to light and views.

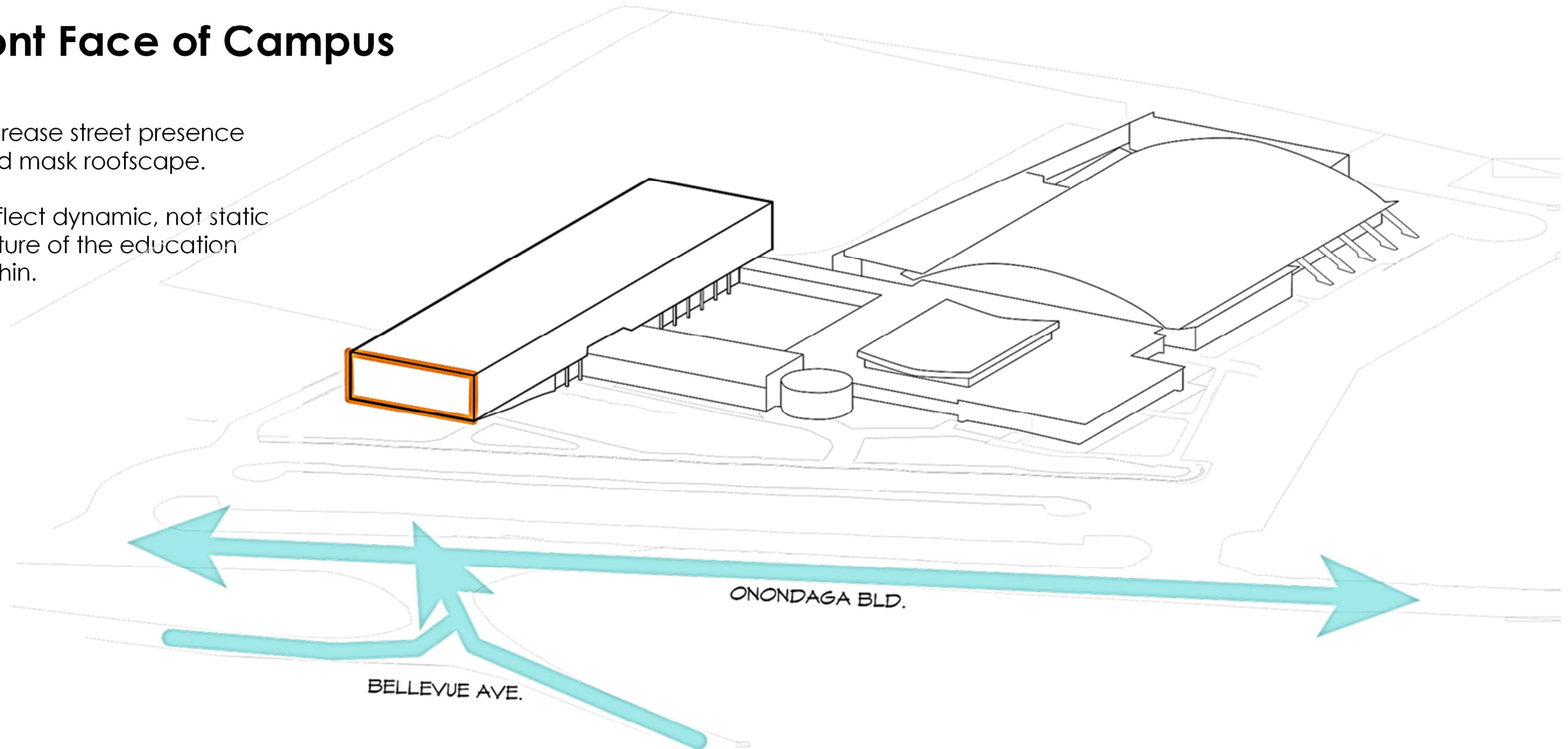




ASHLEY MCGRAW

## Front Face of Campus

- Increase street presence and mask roofscape.
- Reflect dynamic, not static nature of the education within.

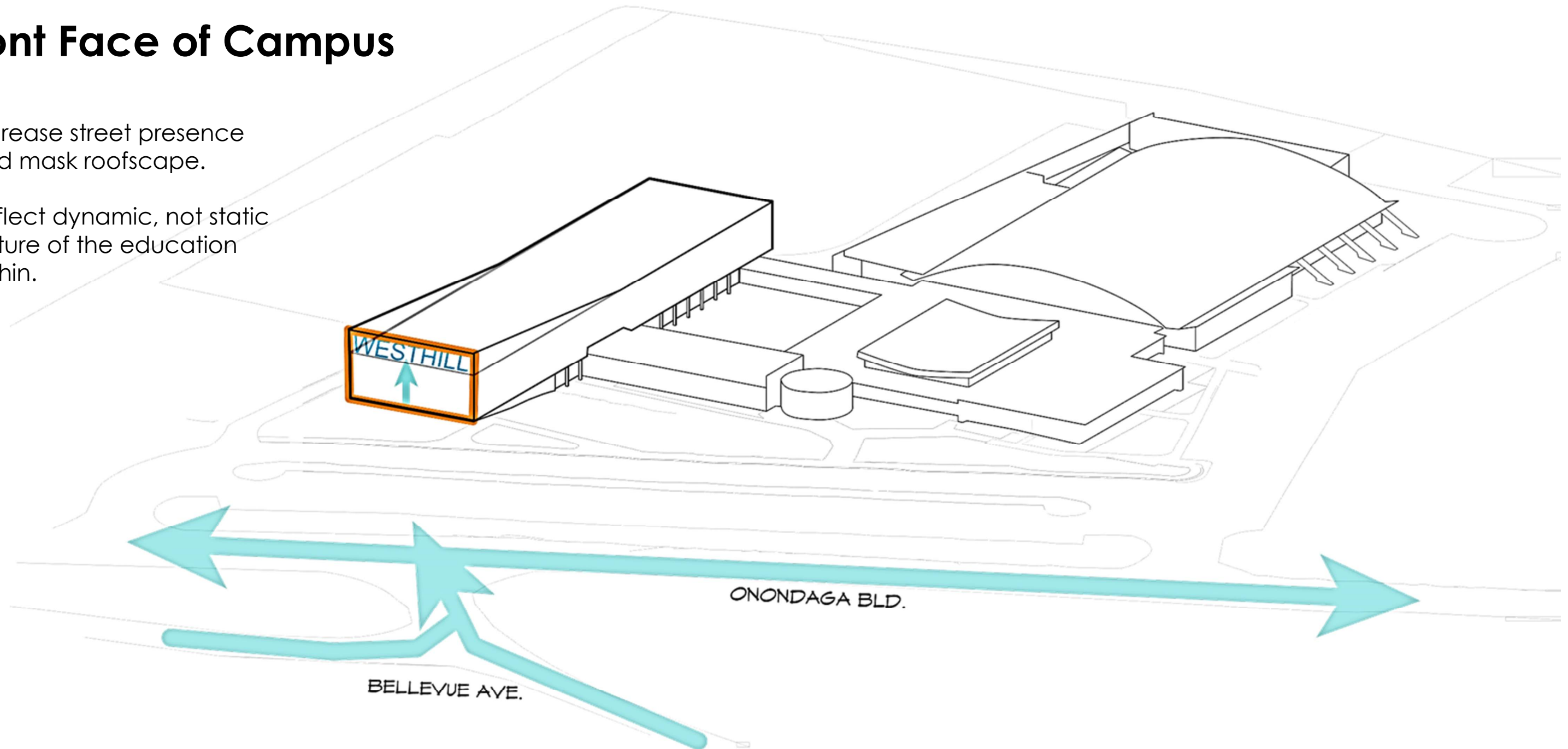




ASHLEY MCGRAW

## Front Face of Campus

- Increase street presence and mask roofscape.
- Reflect dynamic, not static nature of the education within.

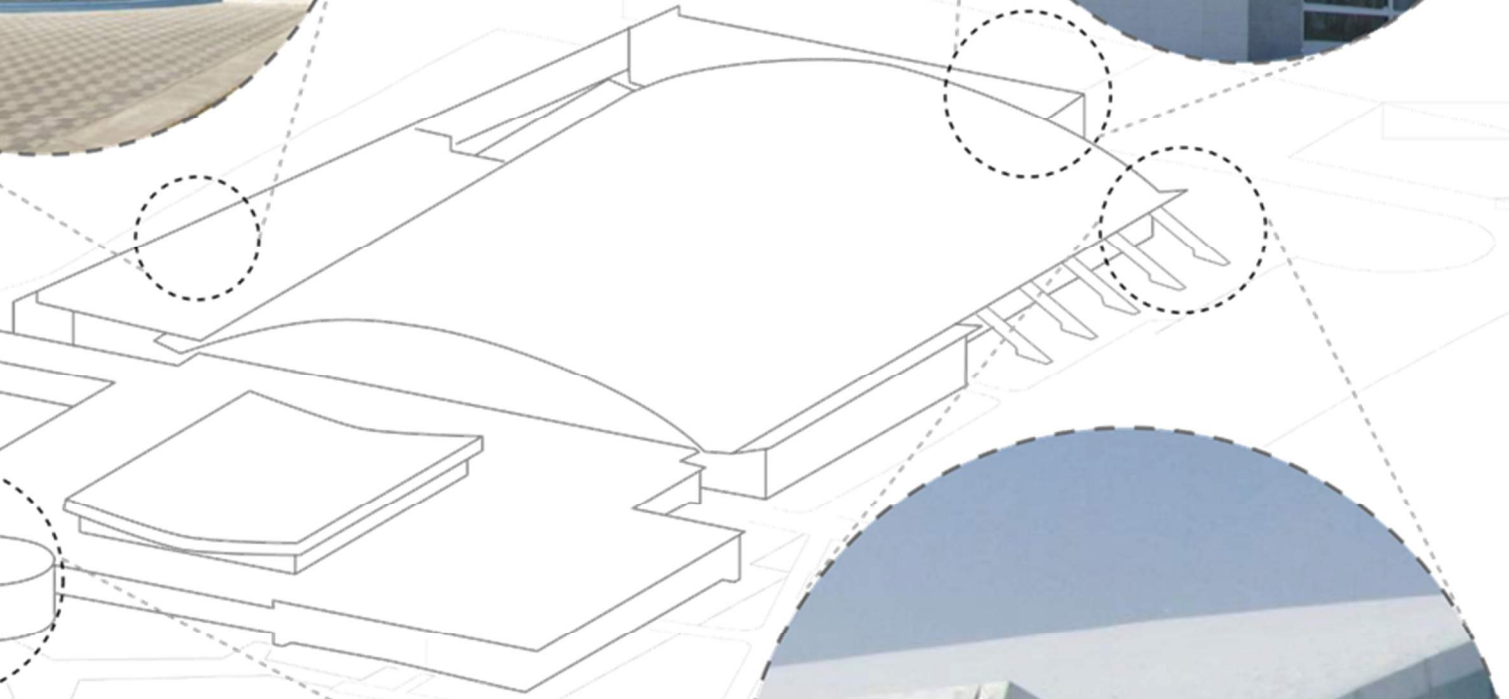
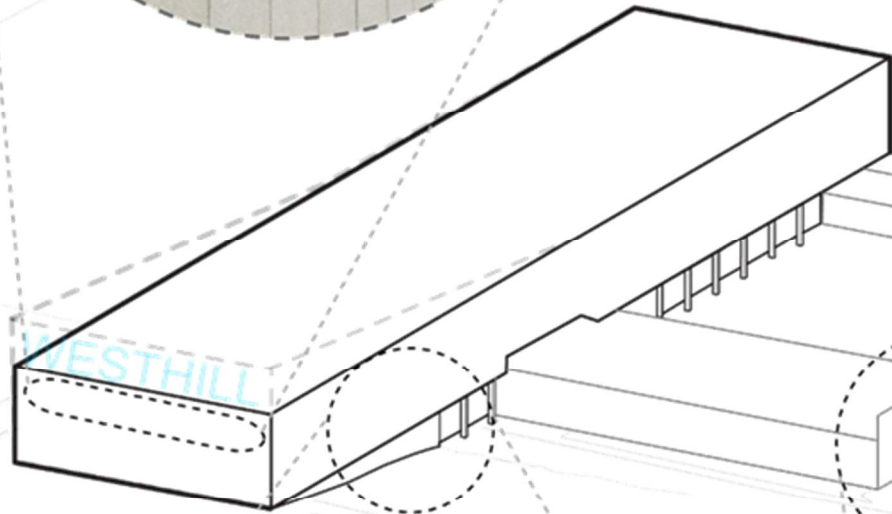




ASHLEY MCGRAW

## Relationship to Existing Building

- Horizontality Vs. Verticality
- Reinforcing column lines
- Color and Texture
- Rational Purity
- Object/ Mass on a base



WESTHILL HIGH  
SCHOOL

ACADEMIC WING  
RENOVATION





ASHLEY MCGRAW



WESTHILL HIGH  
SCHOOL

ACADEMIC WING  
RENOVATION





ASHLEY MCGRAW



WESTHILL HIGH  
SCHOOL

ACADEMIC WING  
RENOVATION





ASHLEY MCGRAW

## SCHEDULE

**DESIGN DEVELOPMENT** - 30 MAR 16

**CONSTRUCTION DOCUMENTS** - 13 JUN 16

**SED REVIEW (32-34 WEEKS)** - 24 JAN 17

**ADDENDUM/FINAL APPROVAL (2 WKS.)** – 6 FEB 17

**BID (6 WKS.)** – 27 MAR 17

**CONSTRUCTION ( 94 WEEKS)** - 21 JAN 19

**SUMMER 2017, 2018 CONSTRUCTION**

